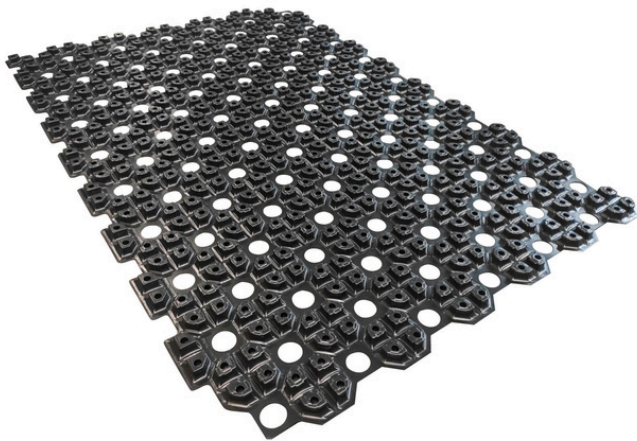


CASTELLATED LOW PROFILE SYSTEM



SEE NEXT PAGE FOR PANEL MEASUREMENTS

The castellated low profile underfloor heating system is designed for refurbishment projects where floor build up is at a premium. The system incorporates either a 12mm or a 16mm underfloor heating pipe within a plastic castellated panel, which is then covered with 20mm reinforced levelling compound.

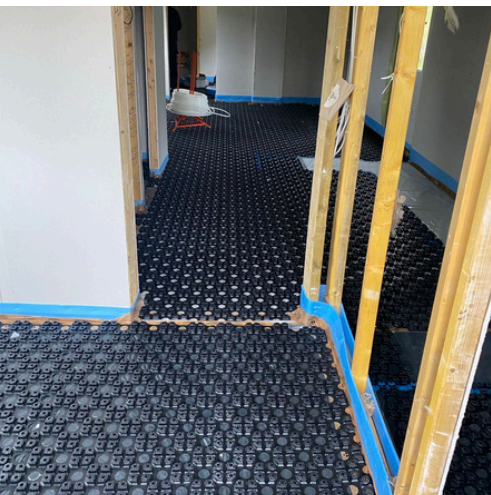
This system is designed to be laid directly onto a structural and level sub-floor or chipboard floor or insulation layer.

Most floor finishes can be laid directly on top of this system. With tiled floors we would recommend the use of a decoupling membrane to soak up any lateral movement and reduce the risk of hairline cracks appearing in the grout.

Product Codes:

**HOR/CAST/1100-700/GLU-12:
CASTELLATED PANEL FOR 12MM PIPE**

**HOR/CAST/1090-790/GLU-16:
CASTELLATED PANEL FOR 16MM PIPE**



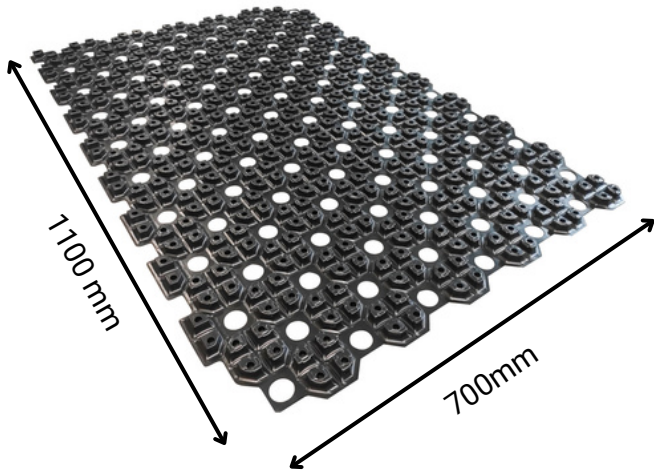
HÖRSTAD



WWW.HORSTAD.COM

CASTELLATED LOW PROFILE SYSTEM

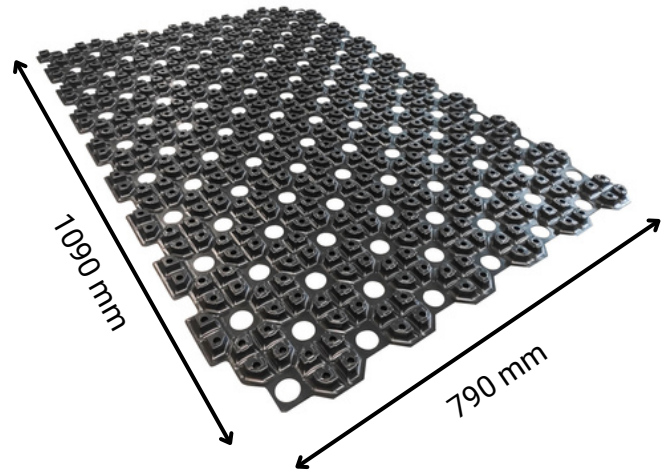
HOR/CAST/1100-700/GLU-12 MEASUREMENTS



HEIGHT OF CASTLES



HOR/CAST/1090-790/GLU-16 MEASUREMENTS



HEIGHT OF CASTLES

