



**HÖRSTAD**



## **OUR MISSION**

Our mission is to revolutionize the underfloor heating industry by combining cost efficiency, innovation and a commitment to delivering exceptional service.

## **OUR VISION**

To make underfloor heating available and affordable for all.

## **OUR VALUES**

**H**onesty  
**O**pen-minded  
**R**eliable  
**S**elfless  
**T**hankful  
**A**mbition  
**D**iscipline

# Beyond the ordinary.

**We are HÖRSTAD: the market-leading manufacturer of underfloor heating systems that promises results beyond the ordinary.**

Serving architects, developers, builders and installers with a service renowned for engineering excellence, innovation and energy efficiency, our experience and expertise is trusted throughout the UK and beyond. **Why settle for standard?**



## **Unrivalled Expertise**

Advice you can trust



## **Superior Quality**

Reliable service guaranteed



## **Fast Design**

Rapid design service



## **Setting the Standard**

Quality you can rely on











## We're more than just an underfloor heating manufacturer.

We are experienced designers and leading experts in underfloor heating products, bringing together a dynamic team of product designers and engineers to provide a complete solution for our customers.

### KEEP UP TO DATE WITH US ONLINE



[@horstad\\_underfloor\\_heating](#)



[@horstad\\_underfloor\\_heating](#)



[@Horstad](#)



[@horstadheating](#)



**CAN'T FIND WHAT YOU'RE  
LOOKING FOR?**

**give us a call on  
01506 379258**

**or send an email to  
[hello@horstad.com](mailto:hello@horstad.com)**



# CONTENTS

## PRODUCTS

Manifolds	9-12
Mixing Pump Set	13-14
Isolating Valve	15
Actuator Valve	16
Manifold Connectors	17
Pipe Bends	18
PE-RT Pipe	19
PERT-AL-PERT Pipe	20
Pipe Conduit	21
Pipe Cutters	22
Pipe De-Coilers	23-24
Border Edge Insulation	25
Tape	26
Vapour Barrier	27-28
Tacker Gun	29-30
Tacker Clips	29-30
Clip Rail	31
Wiring Centre	32
Thermostats	33-34
UFH Designs	35-36

## SYSTEMS

Acoustic Wood Board System	39
Chipboard Panel System	40
Castellated Low-Profile System	41
Castellated System	42
CastelKlip	44
Cement Coated Low-Board System	45-46
Clip Rail with Biscuit Screed System	47
Clip Rail with Liquid Screed System	48-49
EPS Overlay - Concrete System	51
EPS Overlay - Timber System	52
Diffuser Plate System	53
Structural Slab System	54
Tacker System	55

## MERCHANDISE

57

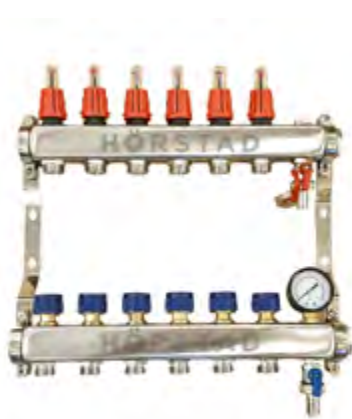
# MANIFOLD

**Underfloor heating manifolds are the heart of the system, from this point it distributes warm water to each underfloor heating zone. They connect the underfloor heating pipework to the heat source, feeding water at the correct temperature from either the boiler or heat pump via a blending valve.**

**The manifolds are able to control multiple zones at once, generally zones refer to individual rooms which are controlled via their own thermostat. Each loop on the return bar has a valve to open or close the loop, controlled by the actuator valve, which responds to the call for the heat from the thermostat.**

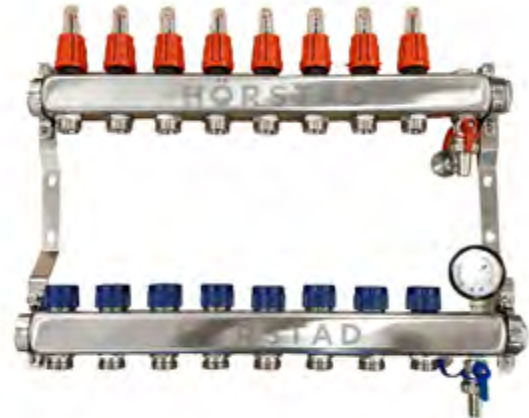
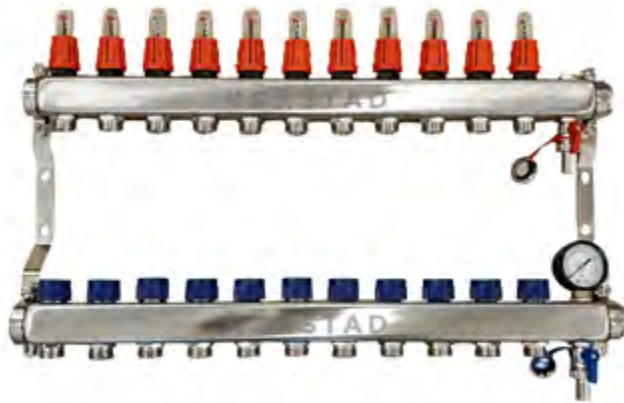
*Manifold consists of:*

- *Steel beams with hole spacing of 50mm*
- *Flowmeters*
- *Thermostatic Valves*
- *1/2" - 3/4" nipples*
- *Eurocone 3/4" - 16 x 2 mm*
- *1" blanking plug*
- *Fill and drain section with a ball valve and hose connection nipple*
- *Manual air release vent alternately*
- *Automatic air release vent*
- *2 mounting brackets length 235mm or 210mm*



Recommended minimum installation clearances: 200mm between the finished floor level and bottom of the manifold. 100mm above the manifold, 50mm to either side of the manifold and allow an extra 100mm for the supply pipe work.

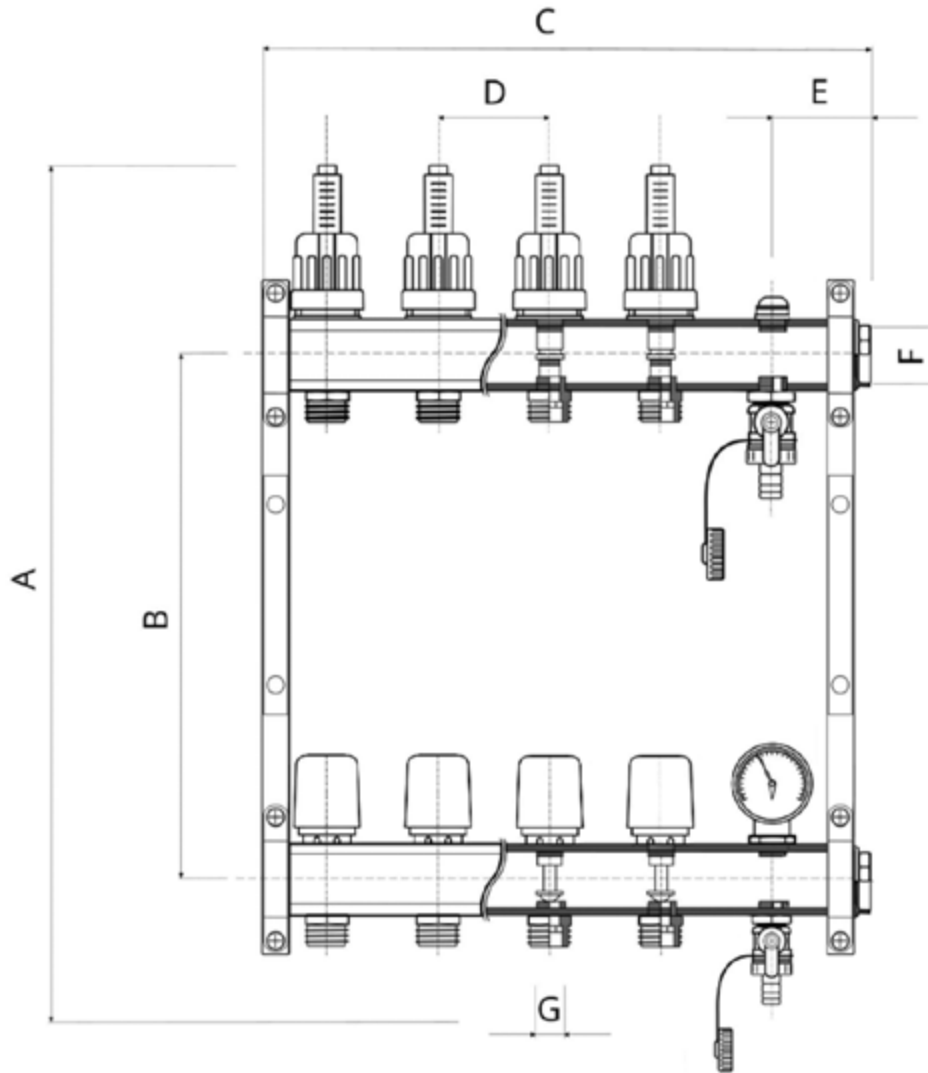




## To order please quote:

Port	Product Reference	Product Name
2	HOR/MAN-02/SS	HÖRSTAD Manifold 2 Port - Stainless Steel
3	HOR/MAN-03/SS	HÖRSTAD Manifold 3 Port - Stainless Steel
4	HOR/MAN-04/SS	HÖRSTAD Manifold 4 Port - Stainless Steel
5	HOR/MAN-05/SS	HÖRSTAD Manifold 5 Port - Stainless Steel
6	HOR/MAN-06/SS	HÖRSTAD Manifold 6 Port - Stainless Steel
7	HOR/MAN-07/SS	HÖRSTAD Manifold 7 Port - Stainless Steel
8	HOR/MAN-08/SS	HÖRSTAD Manifold 8 Port - Stainless Steel
9	HOR/MAN-09/SS	HÖRSTAD Manifold 9 Port - Stainless Steel
10	HOR/MAN-10/SS	HÖRSTAD Manifold 10 Port - Stainless Steel
11	HOR/MAN-11/SS	HÖRSTAD Manifold 11 Port - Stainless Steel
12	HOR/MAN-12/SS	HÖRSTAD Manifold 12 Port - Stainless Steel

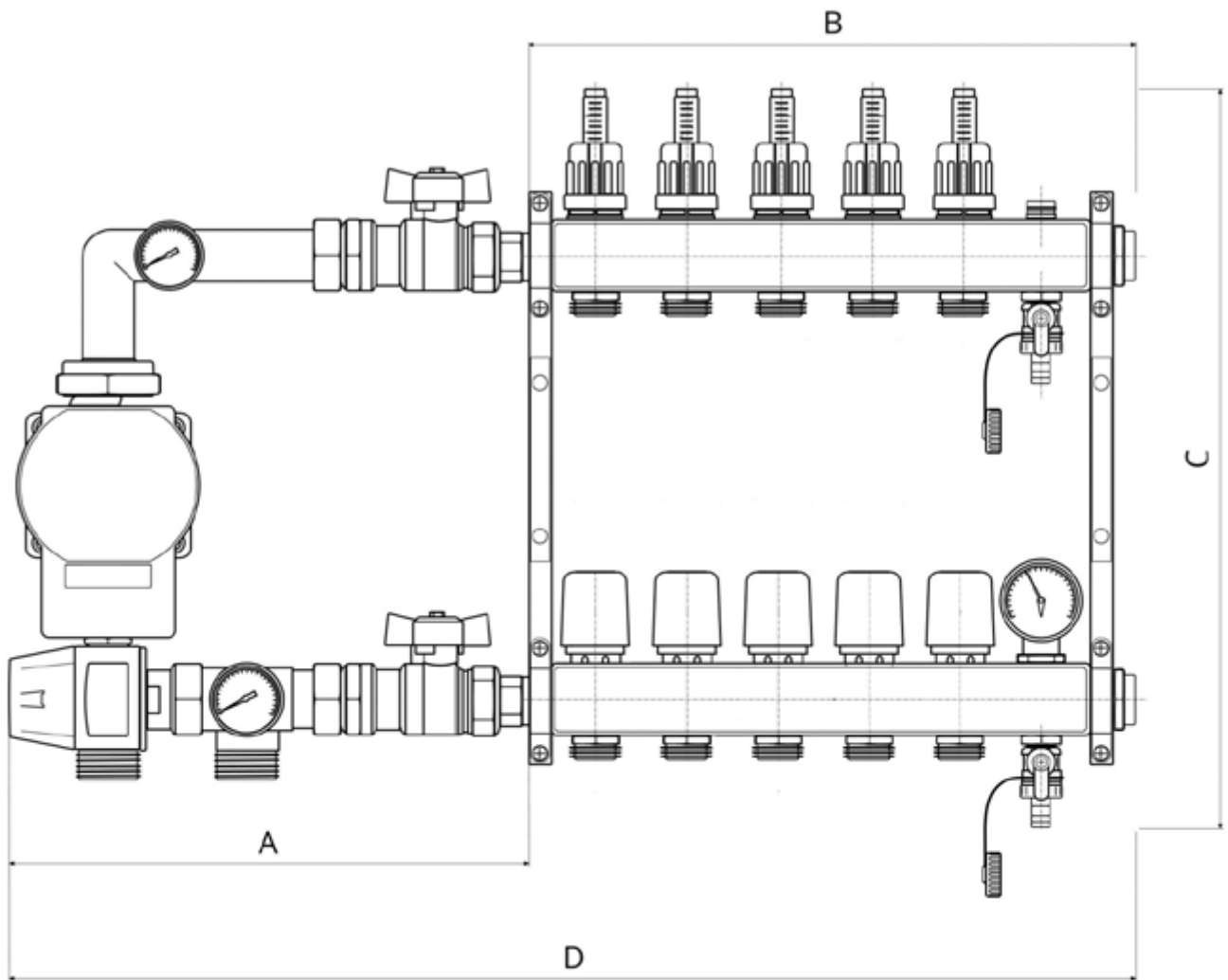
# MANIFOLD



Recommended minimum installation clearances: 200mm between the finished floor level and bottom of the manifold. 100mm above the manifold, 50mm to either side of the manifold and allow an extra 100mm for the supply pipe work.

MANIFOLD PORTS	2	3	4	5	6	7	8	9	10	11	12
A- Total Maximum Height (mm)	400	400	400	400	400	400	400	400	400	400	400
B- Beam Spacing (mm)	235	235	235	235	235	235	235	235	235	235	235
C- Total Length (mm)	180	230	280	330	380	430	480	530	580	630	680
D- Space Between Ports (mm)	50	50	50	50	50	50	50	50	50	50	50
E- Air Vent (mm)	43	43	43	43	43	43	43	43	43	43	43
F- Diameter of Beams (in)	1"	1"	1"	1"	1"	1"	1"	1"	1"	1"	1"
G- Diameter of Accessories Connector (in)	1/2"	1/2"	1/2"	1/2"	1/2"	1/2"	1/2"	1/2"	1/2"	1/2"	1/2"
Net Weight (g)	1772	2185	2594	3021	3432	3845	4256	4667	5078	5489	5900





Recommended minimum installation clearances: 200mm between the finished floor level and bottom of the manifold. 100mm above the manifold, 50mm to either side of the manifold and allow an extra 100mm for the supply pipe work.

MANIFOLD PORTS	2	3	4	5	6	7	8	9	10	11	12
A- Width of mixing pump with ball valves (mm)	260	260	260	260	260	260	260	260	260	260	260
B- Width of manifold (mm)	180	230	280	330	380	430	480	530	580	630	680
C- Total height of manifold (mm)	400	400	400	400	400	400	400	400	400	400	400
D- Total width including mixing pump and ball valves (mm)	440	490	540	590	640	690	740	790	840	890	940

# MIXING PUMP SET

Circulation systems such as underfloor heating systems can only function seamlessly if no air is present in the system. They prevent premature pump failure, improve heat distribution, increase efficiency and make for a low-noise system. That is why our pump has built in a venting routine mode.

In this mode, the pump runs on and off for 10 minutes in order to force the air to the highest point in the system. An installer will then vent the system, check whether the system pressure is still correct and apply more if necessary.

Mixing Pump Set consists of:

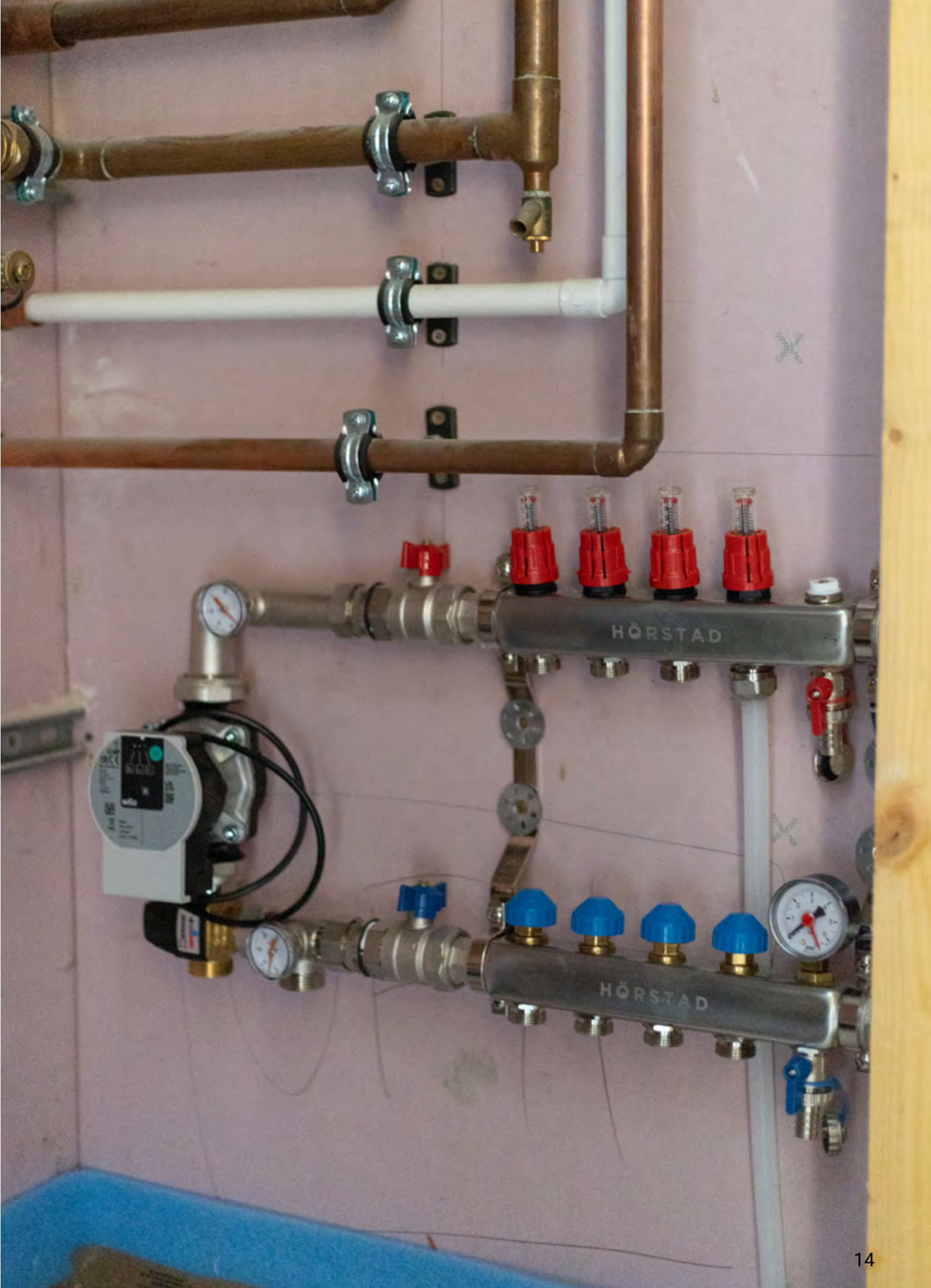
- Three-way thermostatic mixing valve ESBE VTA322 or VTA372
- Thermometers on supply and return beam
- 1" Pump gauge port for manifold and heat source
- Available in 210mm and 235mm manifold connection centres
- Pre-assembled for instant installation
- Dimensions: 340 x 230 x 165mm



**To order please quote:**

Product Reference	Product Name
HOR/MPS-100	HÖRSTAD Mixing Pump Set for Manifold





# ISOLATING VALVE

**1" Isolating valve with pipe fitting (sealing element O-ring) is designed for installation in water-based heating systems. The O-ring seal provides reliable sealing of the valve.**

*Technical Data:*

- *Nominal pressure 3.0 Mpa*
- *Maximum operating temperature: 120°C*
- *Medium: hot and cold water*

**The valve is distinguished by a thick wall of the frame and excellent sealing of the valve stem. A gland in the stem allows easy removal of any leaks. This valve can be operated horizontally, vertically and diagonally. It is used for closing and opening the flow of hot and cold water, and central heating in houses and industrial buildings.**



**To order please quote:**

Product Reference	Product Name
HOR/ISV-RED/01	HÖRSTAD Isolating Valve 1" with Pipe Fitting Red
HOR/ISV-BLU/01	HÖRSTAD Isolating Valve 1" with Pipe Fitting Blue



# ACTUATOR VALVE

Thermoelectric actuators are used for individual control of heating circuits on an underfloor heating manifold - this is especially important with multiple loops controlling different heating zones.

The valve contains a wax element, which on receipt of a signal from the thermostat (normally via a wiring control box), the valve will open, allowing the warm water to flow through the relevant pipework loop. The actuator valves are fixed onto the manifold return beam with a M30 nut (part of the valve).

## Technical Data:

- Supply voltage: 230V
- Permanent power absorption: 1W
- Time of closing/opening: 3 min
- Nominal stroke: 4mm
- Ambient temperature: max 60 °C
- Power cable: 2 x 0.75mm<sup>2</sup>, 0.8m

## Assembly:

- The actuator is to be installed on the thermoregulation valves on the 'return' beam with the use of standard M30 x 1.5 connection



## To order please quote:

Product Reference	Product Name
HOR/ACV-230	HÖRSTAD Actuator Valve 230V

# MANIFOLD CONNECTORS

Each manifold port requires one connector per flow and one per return pipe. For example: a 10 port manifold requires 20 connectors.

The manifold connectors are required to join PE-RT pipe to the manifold for use with wet underfloor heating. We stock different size connectors to suit 12, 16 and 20mm pipe.

Manifold connectors consist of:

- 1/2" - 3/4" Nipples
- 3/4" Compression fittings for pipe PEX 16 x 2/12 x 2/20 x 2

Product dimensions:

- 18 x 30 x 30mm

Technical data:

- Max. working pressure: 1.0 Mpa
- Max. operating temperature: +95°C



**To order please quote:**

Product Reference	Product Name
HOR/MPC/12-1.5/02	HÖRSTAD UFH Manifold connector for PERT pipe 12x1.5(G) (2 per pack)
HOR/MPC/16-2/02	HÖRSTAD UFH Manifold connector for PERT pipe 16x2(G) (2 per pack)
HOR/MPC/20-2/02	HÖRSTAD UFH Manifold connector for PERT pipe 20x2(G) (2 per pack)

# PIPE BENDS

The pipe bends' support allows the installer to bend heating pipes in a 90 degree bow without forming kinks which impede flow within the pipe. It's elbows can be used to guide pipes through floors, ceilings and to a manifold cabinet. It holds the pipe and directs it to the manifold.

## Dimensions

- Length: 150mm
- Width: 22mm
- Height: 25mm
- 25 pcs per box



## To order please quote:

Product Reference	Product Name
HOR/PB-90/25-12	HÖRSTAD Pipe Bends 90° (25 pcs/box) for 12mm Pipe
HOR/PB-90/12-16	HÖRSTAD Pipe Bends 90° (25 pcs/box) for 16mm Pipe



# PE-RT PIPE

**5-Layer PE-RT/EVOH/PE-RT pipe intended for heating installations, surface heating, ice-free installations and industrial floor heating installations. The pipe is also suitable for pressed systems.**

## Main advantages:

- **Oxygen barrier in accordance with the standard DIN4726**
- **Non-corrosive and free from incrustations**
- **Suitable for use at temperatures below 0°C**
- **Convenient installation**
- **Very good flexibility**
- **High resistance to chemical compounds**
- **High temperature resistance**
- **Tensile strength**

## Technical data

- Thermal conductivity: 0.4W/mK
- Coefficient of thermal expansion:  $1.8 \times 10^{-4} /K$
- Modulus of elasticity: 645 MPa
- Density: 0.941 g/cm<sup>3</sup>
- Tensile strength: 37 MPa
- Maximum elongation: 780%
- Material class: B
- Diffusion tightness: 40°C < 0,1 mg/(m<sup>2</sup>d) / 80°C < 0,34 mg/(m<sup>2</sup>d)
- Installation temperature: -10°C to 40°C
- Water capacity: 0.113l/m
- Surface roughness: 0.004nm
- Pressure level: 6 bar
- T max 70°C



**FLEXIBLE**

**LIFETIME GUARANTEE**



**To order please quote:**

Product Reference	Product Name
HOR/PERT/12-300/02	HÖRSTAD PE-RT Pipe 12mm x 2mm 300m
HOR/PERT/12-600/02	HÖRSTAD PE-RT Pipe 12mm x 2mm 600m
HOR/PERT/16-300/02	HÖRSTAD PE-RT Pipe 16mm x 2mm 300m
HOR/PERT/16-600/02	HÖRSTAD PE-RT Pipe 16mm x 2mm 600m

# PERT-AL-PERT PIPE

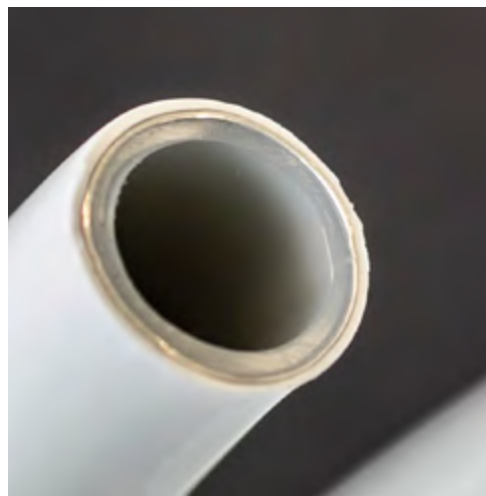
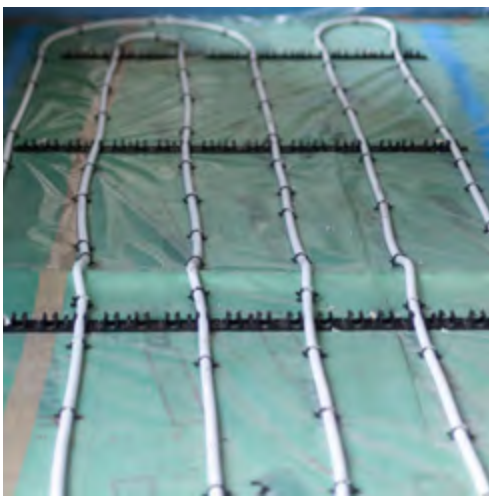
High-quality aluminum core ensures rapid and efficient heat distribution, quickly warming floors with minimal energy consumption.

The core's robust durability guarantees a reliable and long-lasting underfloor heating solution.

Compatible with various floor coverings, the pipes are suitable for both new constructions and retrofit projects, offering easy installation in diverse floor constructions.

## Technical data

- Material: High temperature resistance polyethylene (PE-RT)
- Density: >0,941 g/m<sup>3</sup>
- O<sub>2</sub> Permeability: <0.0010 g/m<sup>3</sup>.d
- Working temperature range: 95°C
- Max. temperature: 110°C
- Thermal conductivity (60°C): 0.43 W/m<sup>2</sup>K
- Coefficient of linear extension: 0.025 mm/m<sup>2</sup>K
- Adhesion resistance: 20 Mpa
- Elongation at break: >400%
- Burst pressure: 80 bar



## To order please quote:

Product Reference	Product Name
HOR/PERT-AL-PERT/16-300/02	HÖRSTAD PERT-AL-PERT Multilayer Pipe 16mm x 2mm 300m
HOR/PERT-AL-PERT/16-600/02	HÖRSTAD PERT-AL-PERT Multilayer Pipe 16mm x 2mm 600m

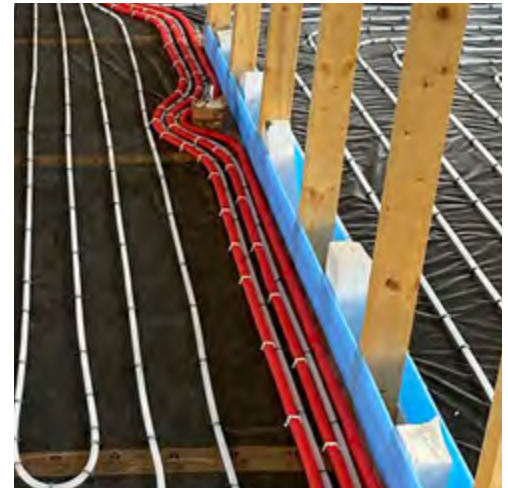
# PIPE CONDUIT

**Our Pipe Conduit protects pipes precisely where needed. Whether in industrial settings, construction sites, or residential areas, the conduit serves as a robust shield against potential damage, ensuring the longevity and efficiency of the system.**

*Technical data:*

- *Dimensions:*  
Length: 50 m  
Outside Diameter: 21mm
- *Material: polipropylen*
- *Packaged in 50m rolls*

**Pipe Conduit is an ideal choice for insulating pipes in compact spaces, such as hallways or areas leading up to the manifold. In environments where multiple pipes are closely situated, the conduit acts as a reliable insulator, preventing heat loss and maintaining optimal operating temperatures.**



**To order please quote:**

Product Reference	Product Name
HOR/PCS-RED/21/50M	HÖRSTAD UFH Pipe Conduit Sleeving Red 50M Roll



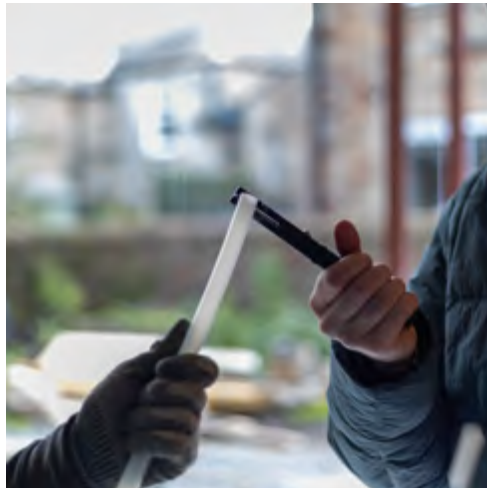
# PIPE CUTTERS

Designed to elevate the precision and efficiency of your pipe installation processes. This versatile tool is crafted to cater to various plastic pipe materials, including PEX, PP-R, PE-RT, PE, and PB, with a maximum diameter handling capability of 20mm.

### Technical data

- Maximum diameter: 20mm
- Product dimensions: 200 x 50 x 18mm

At the end of the ergonomic handle, the cutters are equipped with a conduit cutter. This feature enhances the functionality of the cutter, allowing users to effortlessly trim conduit and further streamline the installation process.



## To order please quote:

Product Reference	Product Name
HOR/PERT-PCT/100	HÖRSTAD Multi Layer PERT Pipe Cutter

# PIPE DE-COILERS

A pipe de-coiler is used for quick pipe unrolling during the installation of underfloor heating. The device facilitates and speeds up the work for an installer and increases the comfort of work.

## Dimensions

- Height: 540 - 800mm
- Weight: 13.8kg
- Capacity: 600m of 16mm pipe

The pipe is placed on the de-coiler and will not get tangled or crushed. Easy assembly and disassembly of the device allows for quick moving from place to place.



## To order please quote:

Product Reference	Product Name
HOR/PDC-600	HÖRSTAD Pipe De-Coiler
HOR/PDC-8000PR	HÖRSTAD Premium Pipe De-Coiler with Internal Arm







# BORDER EDGE INSULATION

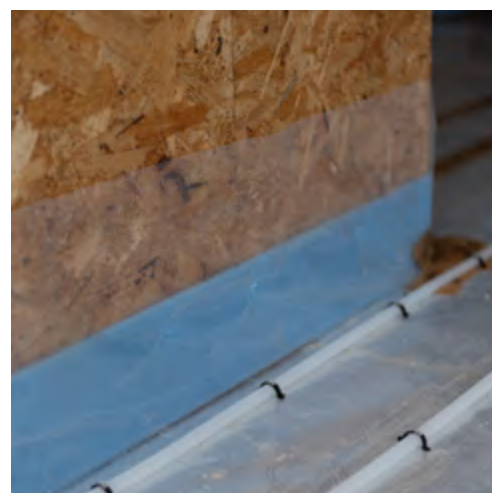
**Border edge insulation is designed for use in underfloor heating systems, laid within a screed. The border edge insulation is run around the perimeter wall of each room to be heated, held in place with a temporary fixing prior to screeding.**

**The standard border edge insulation comes in 50m rolls and for a typical installation we recommend allowing 1 linear metre of edge insulation per square metre of heated floor.**

**We also supply a border edging with overlap available in 50m rolls and with height options of 100 and 150mm. For use with flowing screeds, to ensure that the screed doesn't flow behind the border edge insulation and down the edge of the wall.**

*Border edge insulation has two main functions:*

- To allow some expansion and contraction of the flow screed as it warms and cools.*
- To isolate the screed slab from the outside wall and thereby reduce any thermal bridging.*



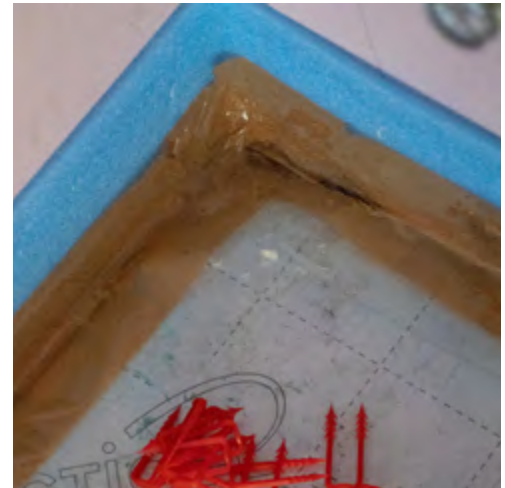
**To order please quote:**

Product Reference	Product Name
HOR/BEI-8-150/50	HÖRSTAD Border Edge Insulation 50m (8mm x 150mm)
HOR/BEI-8-150/25-OVL	HÖRSTAD Border Edge Insulation with overlap 25m (8mm x 150mm)
HOR/BEI-8-100/50-OVL	HÖRSTAD Border Edge Insulation with overlap 50m (8mm x 100mm)
HOR/BEI-8-100/50	HÖRSTAD Border Edge Insulation 50m (8mm x 100mm)

# TAPE

Wide 72mm x 6mm tape for securing vapour barrier and border edge on site.

Long lasting adhesive and durable to ensure everything stays in place. Easy to use for fast installation.



**To order please quote:**

Product Reference	Product Name
HOR/TPE/72-66	HÖRSTAD Tape Wide 72mm x 66m





# VAPOUR BARRIER

Vapour barrier protects the layers of the floor structure from moisture contained in the concrete screed during its hydration and seasoning.

*Technical data for Vapour Barrier*

- Length: 50m
- Width: 4m

We also offer a gridded membrane made from a high strength, woven fabric coating in specialist polypropylene to ensure that the installation is easy, effective and works the first time, offering super high tensile strength, which ensures the pipes stay in place and don't tear the material during the screeding process. Each roll has a printed grid as standard, giving correct pipe and clip spacing every time.



## To order please quote:

Product Reference	Product Name
HOR/VB-125MU/200	HÖRSTAD Vapour Barrier 125mu 50m (200 sqm)
HOR/GRM-1.2-100/120SQM	HÖRSTAD UFH Grid Membrane 1.2m x 100mm (120sqm)

# TACKER GUN & CLIPS

A tacker gun is an ergonomic device used for an effective fixing of underfloor heating pipe using tacker clips. The device has an appropriate adjustment system which protects the clips from falling out and allows to set the force of the arm returning to the base position.

The tacker clips are used to fasten the underfloor heating pipes to insulation.

Advantages of working with a tacker gun:

- Reduced assembly time
- High efficiency and comfort
- Device reliability
- High installation precision
- Ease of use
- Solid construction and high quality materials ensure longevity
- High resistance to damage



**To order please quote:**

Product Reference	Product Name
HOR/TGE-40	HÖRSTAD Tacker Gun 40 for 40mm Tacker Clips
HOR/TAK-40/300	HÖRSTAD Black Tacker Clips 40mm (300pcs)
HOR/TAK-50/300	HÖRSTAD Black Tacker Clips 50mm (300pcs)
HOR/TAK-60/300	HÖRSTAD Black Tacker Clips 60mm (300pcs)





# CLIP RAIL 1M LENGTH

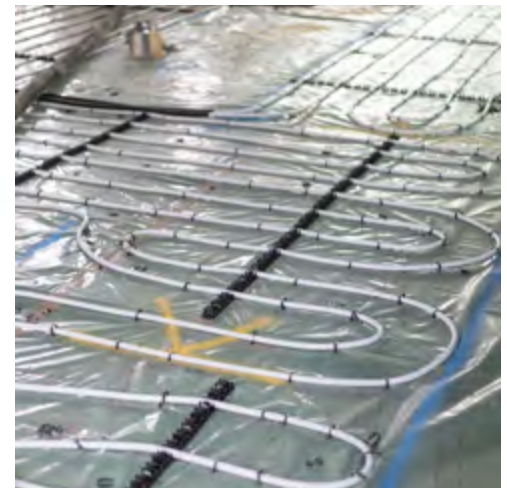
Clip rail is used for wet underfloor heating and is great for use on large areas. Designed for pipes with diameters of 16-18 or 25mm. The rails are available in 1000mm lengths, consisting of two 500mm sections, 100 pieces per pack.

The clip rails clip together for fast installation and minimal fuss. Small, lightweight clip rails are easy to handle and move around on site. The fastest and easiest product to lay for screeded floors.

Manual clips are used to fix clip rails to the flooring insulation and hold the clip rails in place whilst the underfloor heating pipe work is being fitted. The manual clips are available in 66mm, 200pcs per bag.



**EASY**   
**INSTALL**



**To order please quote:**

Product Reference	Product Name
HOR/CLR-1420-1M/100	HÖRSTAD Clip Rail 1m Length (14-20mm) 100pcs
HOR/CLR-1420-1M/GLU-100	HÖRSTAD Clip Rail 1m Length with adhesive(14-20mm) 1000pcs
HOR/MCP-66/200	HÖRSTAD Manual Clips 66mm (200pcs/bag)

# WIRING CENTRE

Our wiring centre is a well sized robust design, with 10 zones as standard, a volt free boiler interlock and an adjustable pump delay, this product adds better performance capability to your underfloor heating system. Integrated connections for two independent valves, typically hot water cylinder and 1st floor radiator circuits, making heating control installation easier and faster. Typically these can be two or three port zone valves.

Zone 10 has a dedicated dip switch to opt the circuit out of operating the secondary circulation pump, beneficial for radiator circuits not needing the secondary pump.

With top thermostat and bottom actuator generous cabling entries, the installation is less crowded and easier to wire up.

With LED lit circuits visible for power, boiler, pump and one of the two additional valves. When cover is closed it makes for simple troubleshooting and resolution.

Our wiring centre comes with a 5 year guarantee from date of install.



## To order please quote:

Product Reference	Product Name
HOR/WC/1-10/230	HÖRSTAD 1-10 Zone 230V Wiring Centre

# STANDARD PROGRAMMABLE THERMOSTAT

The standard programmable thermostat is both a simple digital and programmable digital smart thermostat directly controlled using five tactile easy push buttons along the bottom front face.

Defaulting to a weekly programming mode, to select simple digital mode, in programming mode simply select option to disable, making this easier for users who have no need of timed on and off sequences. Slimline styling at only 14mm back to front depth. The large display face offers an easy to read screen.

A mains powered low energy thermostat, using less than 1 Watt of power to operate, costing less than conventional thermostats to operate.

Comes with a 5 year guarantee from date of install.

Standard programmable thermostat features:

- Energy saving mode built in
- Weekly planned cycles with 5 working days and 2 weekend choices and each of these days can be set up to 6 cycles of on and off
- Highly accurate internal temperature sensor, adjustable in 0.5° increments
- Capable of supporting an external sensor
- Locking function to prevent misuse
- Open window detection
- Temporary manual override button
- Designed to be used as a room or zone thermostat



To order please quote:

Product Reference	Product Name
HOR/PRT-230/W	HÖRSTAD Standard Thermostat



# PREMIUM WI-FI THERMOSTAT

The premium wi-fi thermostat is a programmable smart digital thermostat, controlled by either an app on your smartphone or can be directly controlled using the five soft touch icons along the bottom. The smooth tempered glass display offers a sleek and contemporary look.

There is no need for an additional router, simplifying installation, time, and cost. The globally recognised Smart Life app makes installation and set-up fast and simple.

An energy saving mode is built in. This override gives end users a manual or timed set back function, automatically reducing set temperature to a pre-selected level at a selected time, ideal for holiday or vacant occupancy.

Comes with a 5 year guarantee from date of install.



Premium Wi-Fi thermostat features:

- Open window detection
- Icon lock to prevent misuse
- Set min/max temperatures in regular use
- Weekly planned cycles with 5 working days and 2 separate weekend choices. Each day can be set to 6 cycles of on and off
- Highly accurate internal temperature sensor, adjustable in 0.5° increments
- Designed to be used as a room or zone thermostat



To order please quote:

Product Reference	Product Name
HOR/WIFI-230/W	HÖRSTAD Premium Wi-Fi Thermostat

# UNDERFLOOR HEATING DESIGNS

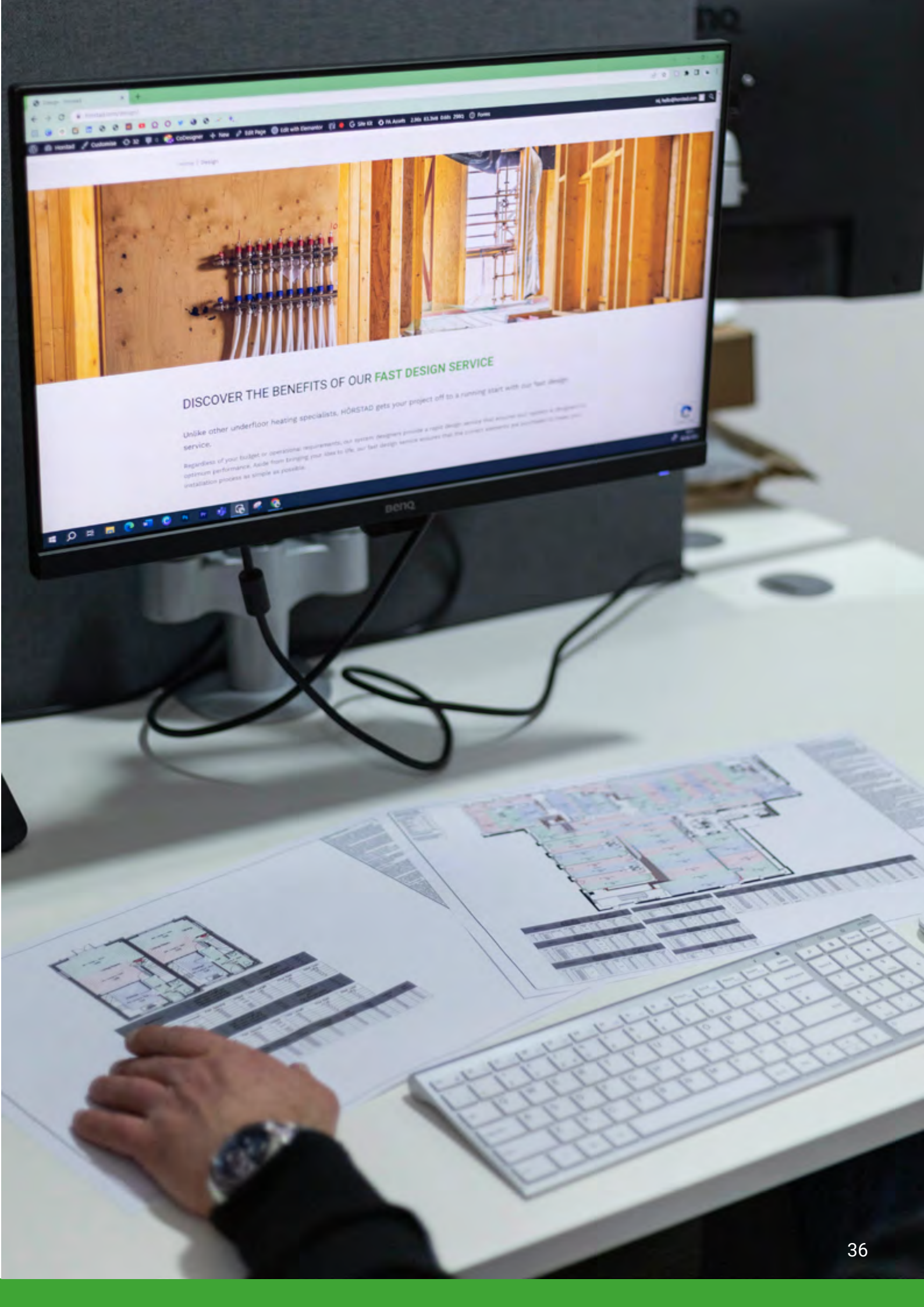
All underfloor heating design work is carried out by our own design team. Having our own design team means that we can be much more flexible during the design stage and can quickly accommodate any alterations if required.

Designs are carried out to relevant standards including BS EN1264 and following CIBSE guidelines.

We offer a 24-hour design + quote service meaning we aim to get your designs + quote back to you within 24 hours.

## To order please quote:

Product Reference	Product Name
HOR/UFH-DES-100	HÖRSTAD UFH Designs



## DISCOVER THE BENEFITS OF OUR FAST DESIGN SERVICE

Unlike other underfloor heating specialists, HÖRSTAD gets your project off to a running start with our fast design service.

Regardless of your budget or operational requirements, our system designers provide a rapid design service that ensures that systems are designed to optimum performance. Aside from bringing your idea to life, our fast design service ensures that the correct systems are installed to meet your installation process as simple as possible.



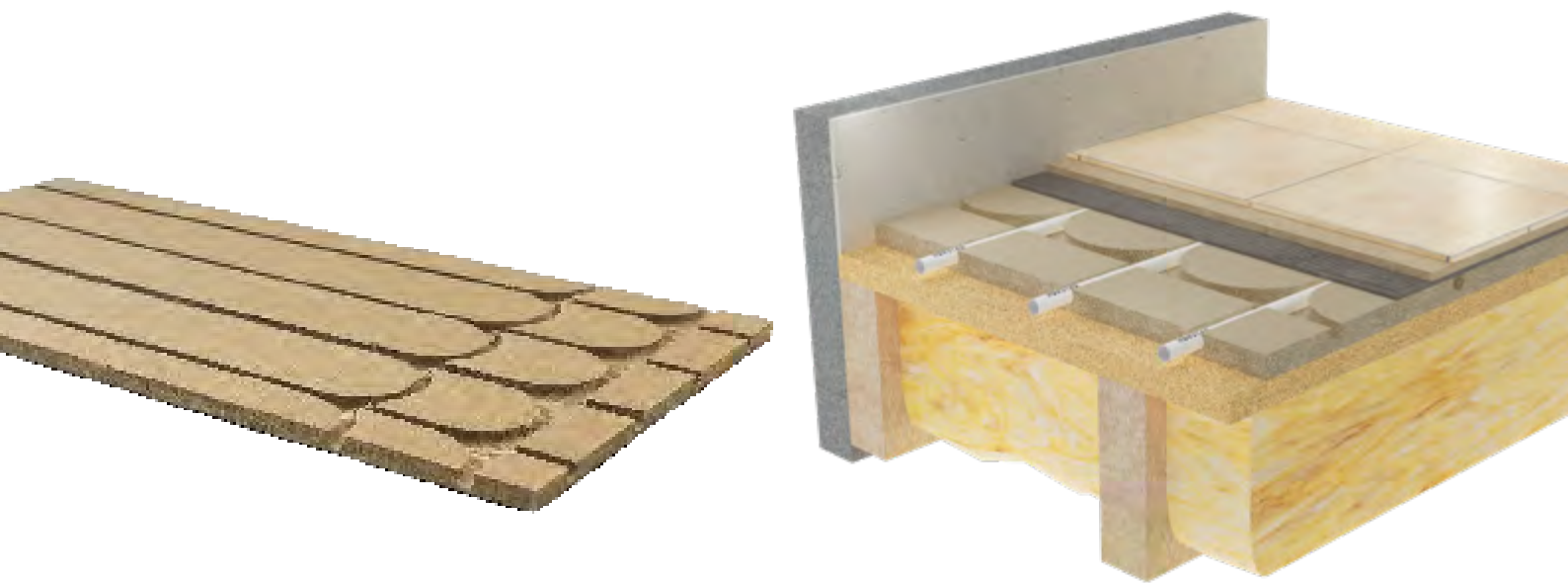
# WET UNDERFLOOR HEATING SYSTEMS

**As the UK's leading designer, manufacturer and supplier of Underfloor Heating Systems and their related products, our reputation is based on a foundation of superior product quality. Whether you're an architect, builder or private homeowner, our extensive inventory provides everything you need to complete a successful UFH installation.**

# ACOUSTIC WOOD BOARD SYSTEM

A revolutionary solution tailored for renovation projects, particularly those involving multi-unit dwellings like apartment blocks. This advanced system not only addresses the practical aspects of underfloor heating but also champions acoustic performance, making it an ideal choice for environments where noise reduction is paramount.

This makes it particularly well-suited for projects involving the renovation of apartment blocks, where reducing inter-floor noise and improving overall acoustic comfort are essential considerations.



## To order please quote:

Product Reference	Product Name
HOR/AWFB/600-1200-24/150C/16	HÖRSTAD Acoustic Wood Fiber Board - straight element with double torsion ending for 16mm Pipe (150mm spacing) 1200mm x 600mm x 24mm
HOR/AWFB/600-1200-36/150C/16	HÖRSTAD Acoustic Wood Fiber Board - straight element with double torsion ending for 16mm Pipe (150mm spacing) 1200mm x 600mm x 36mm
HOR/AWFB/600-1200-24/200C/16	HÖRSTAD Acoustic Wood Fiber Board - straight element with double torsion ending for 16mm Pipe (200mm spacing) 1200mm x 600mm x 24mm
HOR/AWFB/600-1200-36/200C/16	HÖRSTAD Acoustic Wood Fiber Board - straight element with double torsion ending for 16mm Pipe (200mm spacing) 1200mm x 600mm x 36mm



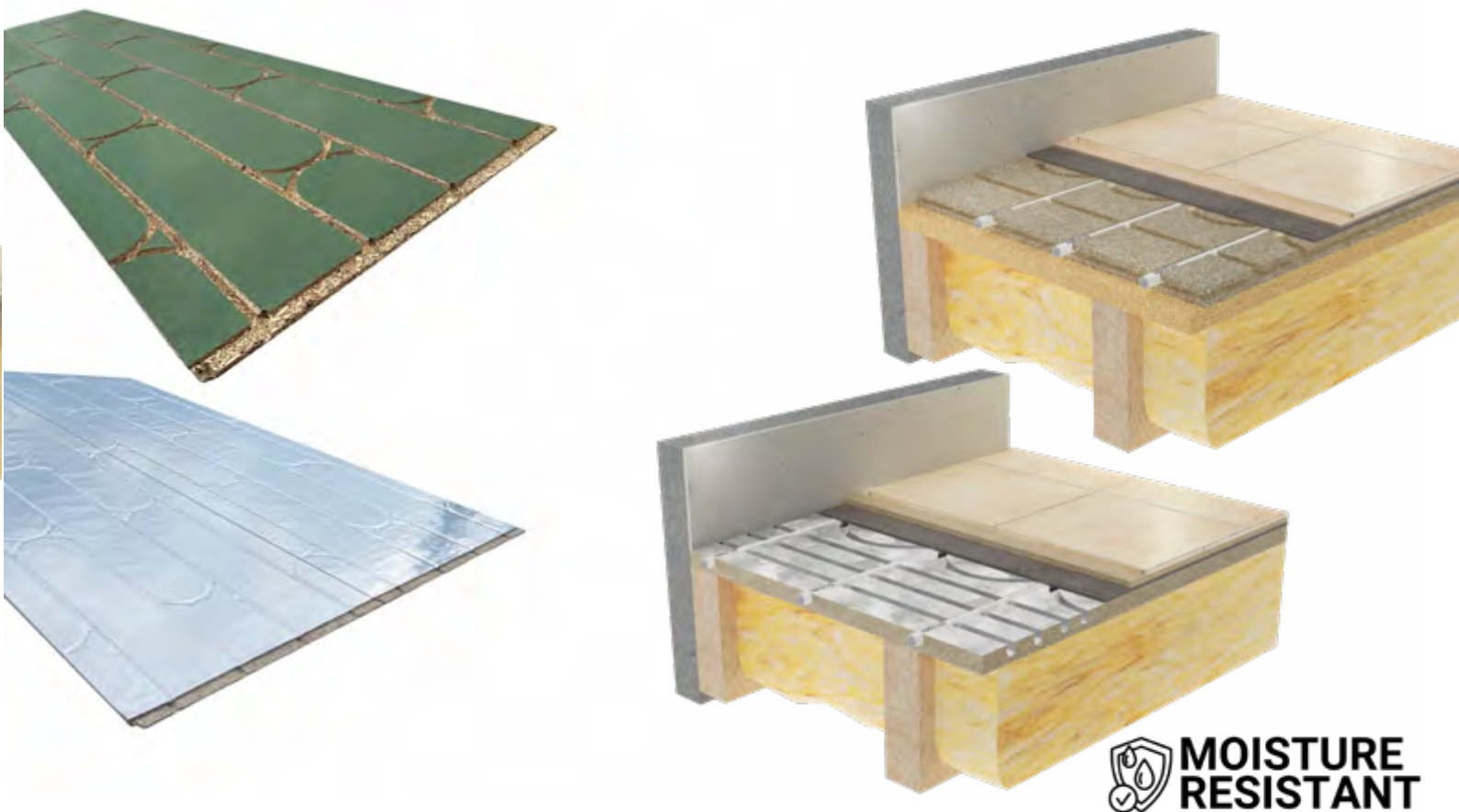
# CHIPBOARD PANEL SYSTEM

Moisture resistant, routed chipboard available standard or foiled. Highly conductive which allows for an even spread of heat throughout the floor. System should be completed with an overlay board or suitable plywood.

The board size is 2400mm x 600mm x 22mm, being grooved on one face as required to suit 12mm underfloor heating pipe with radius returns as standard.

Typically installed directly onto floor joists (usually insulated inbetween), utilising standard chipboard screws and joint adhesive. An overlay board or suitable plywood should be applied prior to the application of any floor finishes.

Suitable for new build or retrofit installations. Installed directly onto floor joists allowing for a lower floor build up. For extra thermal performance we offer a foil faced option.



**To order please quote:**

Product Reference	Product Name
HOR/CPB/1800-605-22/150C/16	HÖRSTAD Chipboard Panel with return for 16mm pipe (150mm spacing) 1800mm x 605mm x 22mm
HOR/CFTB/2400-600-22/150C/12	HÖRSTAD Chipboard Panel Foil Topped for 12mm UFH Pipe (150mm spacing) 2400mm x 600mm x 22mm

# CASTELLATED LOW PROFILE SYSTEM

The castellated low profile underfloor heating system is designed for refurbishment projects where floor build-up is at a premium. The system incorporates a 12mm and 16mm underfloor heating pipe within a plastic castellated panel, which is then covered with 20mm of reinforced levelling compound.

This system is designed to be laid directly onto a structural and level sub-floor or chipboard floor or insulation layer.

Most floor finishes can be laid directly on top of this system, with tiled floors we would recommend the use of a de-coupling membrane to soak up any lateral movement and reduce the risk of hairline cracks appearing in the grout.

## LOW PROFILE



## To order please quote:

Product Reference	Product Name
HOR/CAST/1090-790/GLU-12	HÖRSTAD Castellated Panel for 12mm Pipe
HOR/CAST/1090-790/GLU-16	HÖRSTAD Castellated Panel for 16mm Pipe

# CASTELLATED SYSTEM

The castellated system provides a quick, flexible and effective form of heating within a screeded floor build up, as well as minimising the height of the overall floor construction.

The panel is a moulded plastic panel, with an overall depth of 20mm - the 'castles' are spaced at 50mm intervals to provide a consistent fixing point and enabling a fast and neat pipework installation.



**To order please quote:**

Product Reference	Product Name
HOR/CAST/1210-810/16	HÖRSTAD Castellated Panel for 16mm Pipe 121cm x 81cm





# CASTELKLIP

When installing UFH system with our low profile castellated panels to ensure the pipes stay secured on the end loops when having 150mm pipe centres, we have developed a very simple and effective clip. It only takes a couple of seconds to fit and it keeps the pipe locked in position prior to the screed being applied.

## Dimensions

- Length: 150mm
- Width: 22mm
- Height: 25mm
- 25 pcs per box



## To order please quote:

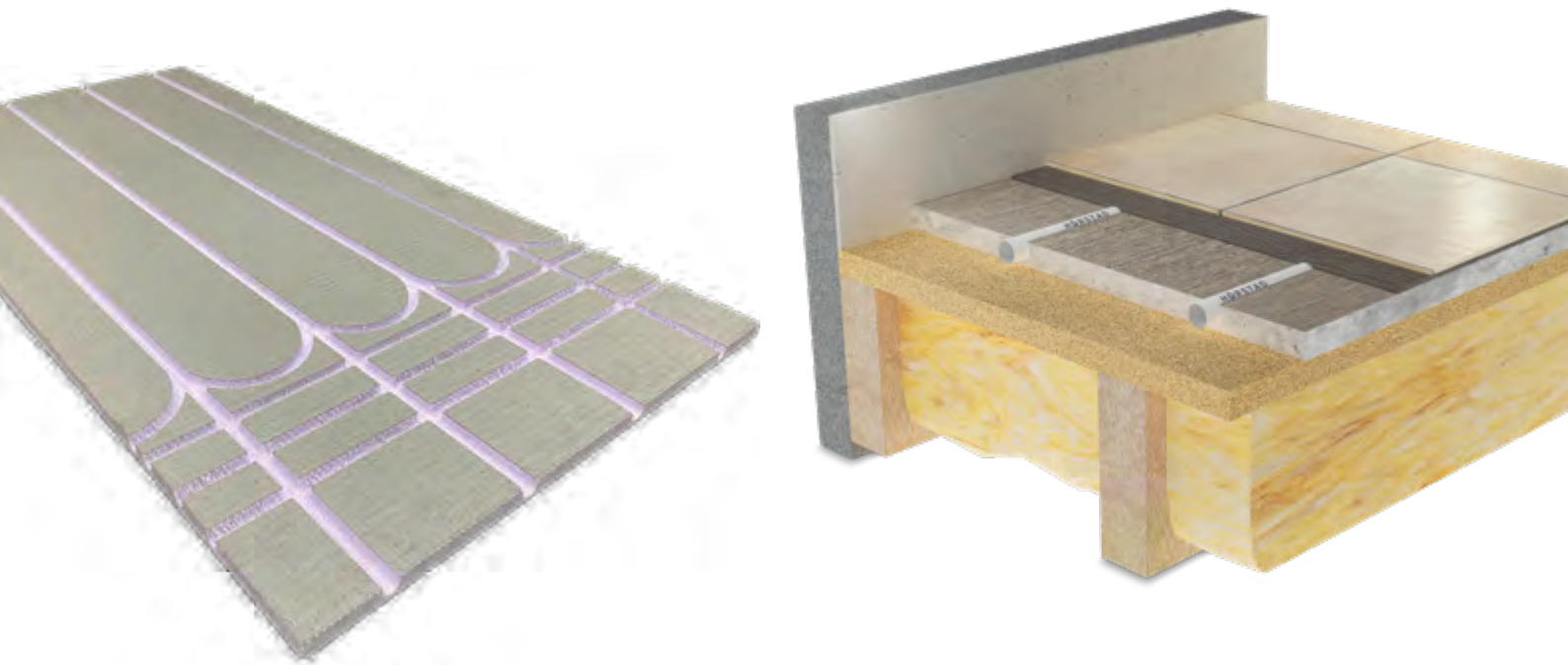
Product Reference	Product Name
HOR/CAST-KLP/50	HÖRSTAD CastelKlip (pack of 50)

# CEMENT COATED LOW-BOARD SYSTEM

The routed overlay panels are manufactured from high density XPS which is thermally insulating, lightweight, waterproof and faced with a reinforced cement coating.

The panels are manufactured for use with 12mm pipe and centres at 150mm. The panels must be laid onto a flat and level sub-floor, which can either be concrete or timber based. Over a concrete floor we recommend laying the panels over a combed layer of flexible tiling adhesive. For timber floors we recommend securing with screws and washers.

Tiles and wood flooring can be laid directly over this system. Other finishes such as carpets or vinyl will require a 9mm board layer, prior to the finish layer.



## To order please quote:

Product Reference	Product Name
HOR/CCOB/600-1200-20/150C/12	HÖRSTAD Cement Coated Overlay Board for 12mm Pipe (150mm Spacing)
HOR/CCOB/600-1200-20/200C/12	HÖRSTAD Cement Coated Overlay Board for 12mm Pipe (200mm Spacing)
HOR/CCOB/600-1200-20/150C/16	HÖRSTAD Cement Coated Overlay Board for 16mm Pipe (150 Spacing)
HOR/CCOB/600-1200-20/200C/16	HÖRSTAD Cement Coated Overlay Board for 16mm Pipe (200mm Spacing)





# CLIPRAIL WITH BISCUIT SCREED SYSTEM

## Between Existing Joists

Ideally suited to refurbishment projects, this system will need a ridge insulated board fitted between existing joists. Underfloor heating pipework is attached to the insulation and pipework is then covered by a semi-dry sand and cement screed mix. Flooring is then attached to the joists in the normal manner.

The purpose of the screed is to provide a thermal mass which will absorb the underfloor heating systems heat, which will in turn be gently released into the living areas above.

**EASY**   
**INSTALL**



**To order please quote:**

Product Reference	Product Name
HOR/CLR-1420-1M/100	HÖRSTAD Clip Rail 1m Length 100pcs
HOR/CLR-1420-1M/GLU-100	HÖRSTAD Clip Rail 1m Length with Adhesive 1000pcs

# CLIPRAIL WITH LIQUID SCREED SYSTEM

## For Concrete Sub-Floor

The cliprail system is one of the most common underfloor heating systems providing a quick, flexible and effective form of heating within a screeded floor build-up.

Edge and floor insulation is installed over the sub-floor on to which cliprails are then fixed to by both the adhesive backing strip and barbed staples (where insulation is not supplied, checks should be made to ensure that the insulation is compatible with the cliprail system)

Once the cliprails are secured in position, the underfloor heating pipework is laid in continuous loops and clipped down in accordance with the underfloor heating design drawings.

We recommend that the screeding process is scheduled to follow shortly after installation to avoid leaving the system vulnerable to damage. If a liquid screed is being used the insulation must first be sealed to provide a watertight base.



**To order please quote:**

Product Reference	Product Name
HOR/CLR-1420-1M/100	HÖRSTAD Clip Rail 1m Length 100pcs
HOR/CLR-1420-1M/GLU-100	HÖRSTAD Clip Rail 1m Length with Adhesive 1000pcs



# CLIPRAIL WITH LIQUID SCREED SYSTEM

## For Timber Joisted Structures

This system is a quick and flexible system, providing an even and effective form of heating within a screeded floor on upper levels. The liquid screed has additional binders and additives to be used on timber joisted structures.

UFH Pipework is typically clipped to a vapour barrier sheet and then the liquid screed can be laid to depths as low as 40mm, critically reducing the weight load on supporting structures.

When considering using this system, it is critical to ensure that supporting timber structure has been designed to accommodate the increased weight that is associated with the screed.



**EASY**   
**INSTALL**



**To order please quote:**

Product Reference	Product Name
HOR/CLR-1420-1M/100	HÖRSTAD Clip Rail 1m Length 100pcs
HOR/CLR-1420-1M/GLU-100	HÖRSTAD Clip Rail 1m Length with Adhesive 1000pcs





# EPS OVERLAY - CONCRETE SYSTEM

EPS Overlay requires a flat and level sub-floor for the installation to fully support the floor finish on top. The grooved foiled insulation panels are then laid onto the concrete sub-floor.

The panels are available in 25mm, 30mm or 50mm, however can be manufactured per project to suit. The underfloor heating pipe slots into the pre-grooved insulation panels.

A screed board or timber flooring will be required on top of the insulation panels, then your finished floor can be applied.



## To order please quote:

Product Reference	Product Name
HOR/EPS-ALU/1200-600-20/150PC	HÖRSTAD EPS Overlay Panel for 16mm Pipe 1200x600x20mm 150 PC
HOR/EPS-ALU/1200-600-20/200PC	HÖRSTAD EPS Overlay Panel for 16mm Pipe 200mm Pipe Centres 1200x600x20 200 PC
HOR/EPS-ALI/1200-600-30/150PC	HÖRSTAD EPS Overlay Panel for 16mm Pipe 150mm Pipe Centres 1200x600x30 150 PC



# EPS OVERLAY - TIMBER SYSTEM

EPS Overlay requires a flat and level sub-floor for the installation to fully support the floor finish on top. The grooved foiled insulation panels are then laid onto the structural floor layer.

The panels are available in 25mm, 30mm or 50mm, however can be manufactured per project to suit. The underfloor heating pipe slots into the pre-grooved insulation panels.

A screed board or timber flooring will be required on top of the insulation panels, then your finished floor can be applied.



## To order please quote:

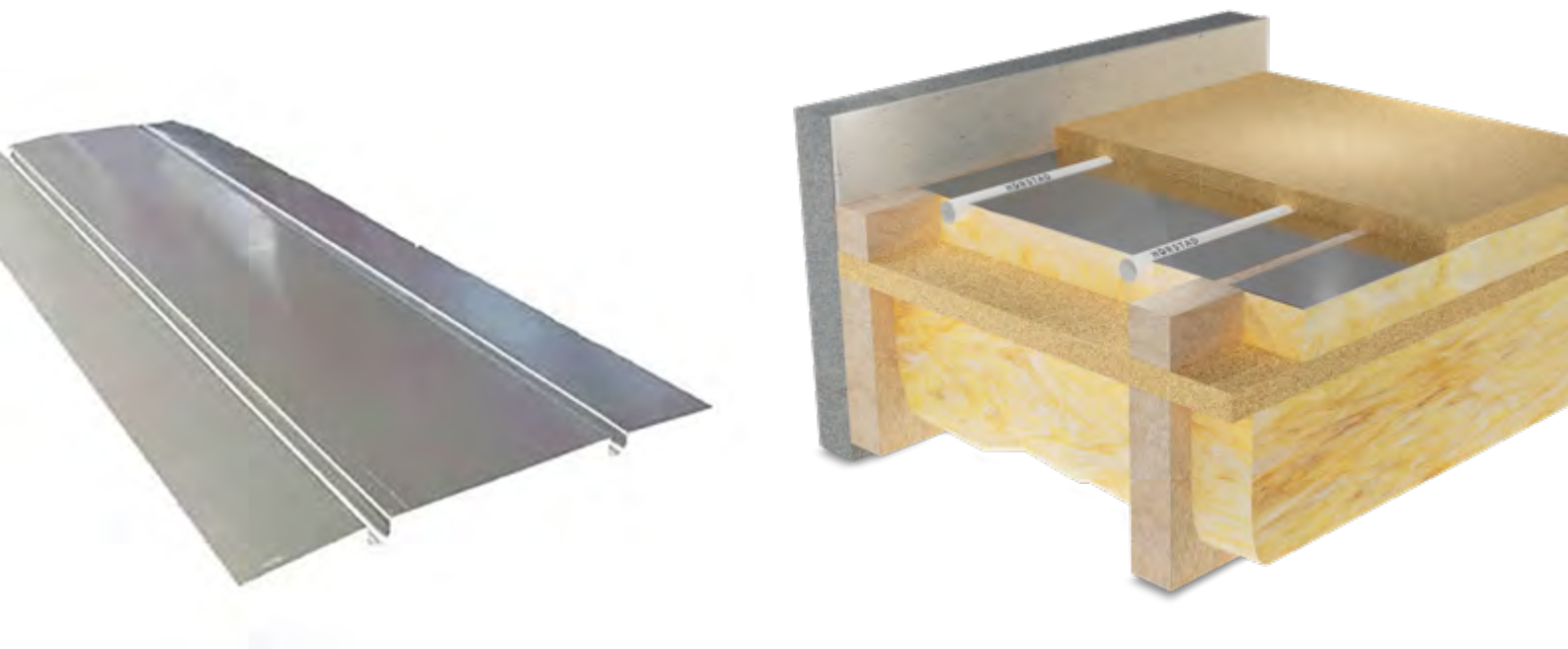
Product Reference	Product Name
HOR/EPS-ALU/1200-600-20/150PC	HÖRSTAD EPS Overlay Panel for 16mm Pipe 1200x600x20mm 150 PC
HOR/EPS-ALU/1200-600-20/200PC	HÖRSTAD EPS Overlay Panel for 16mm Pipe 200mm Pipe Centres 1200x600x20 200 PC
HOR/EPS-ALI/1200-600-30/150PC	HÖRSTAD EPS Overlay Panel for 16mm Pipe 150mm Pipe Centres 1200x600x30 150 PC

# DIFFUSER PLATE SYSTEM

Combining contemporary heating technology with traditional timber floors, the diffuser plate system is designed specifically for joisted floor constructions.

Before the underfloor heating system is installed, mineral wool/fibre insulation, typically a minimum of 100mm, should be laid between the joists. It is important that the insulation layer is pushed up tight to the underside of the plates to maximise heat output.

The diffuser plates are then fixed to either side of the joist void and can be laid on straight pipe runs which typically covers 80% of the heated floor area.



## To order please quote:

Product Reference	Product Name
HOR/PLATE/390-1000/2/16	HÖRSTAD Diffuser Plate 390 x 1000mm for 16mm Pipe
HOR/PLATE/440-1000/2/16	HÖRSTAD Diffuser Plate 440 x 1000mm for 16 Pipe

Further sizing available on request.

# STRUCTURAL SLAB SYSTEM

This system is used where UFH is required to be incorporated into a structural floor build up.

High density flooring insulation panels of the required specification are laid over the complete floor area which is overlaid with a reinforcing mesh. The underfloor heating pipework is then tied to the mesh.

We recommend that the laying of screed/concrete process is scheduled to follow shortly after installation to avoid leaving the system vulnerable to damage. If a liquid screed is used, the insulation must be sealed to provide a watertight base.



**To order please quote:**

Product Reference	Product Name
HOR/CLP-RNF/100	HÖRSTAD Clip for Mounting UFH Pipe to Reinforcing Mesh Pk.100

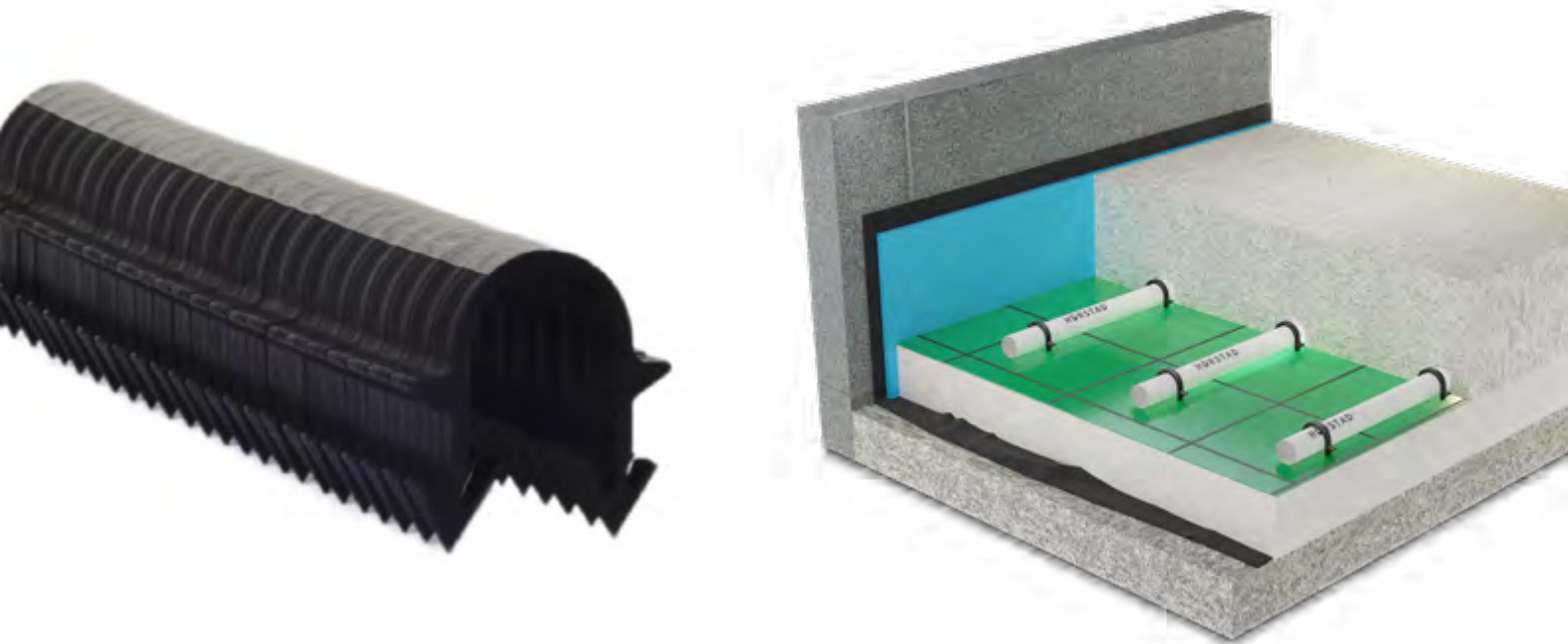


# TACKER SYSTEM

This system is a quick and flexible system, providing an even and effective form of heating within a screeded floor build up. UFH Pipework is typically clipped to a PIR sheet insulation.

Tacker clips are fed from a specialist tool through into the PIR insulation - these staples are barbed to give a good fixing that will withstand the flex of the pipe.

We recommend that the screeding process is scheduled to follow shortly after installation to avoid leaving the system vulnerable to damage. If a liquid screed is used, the insulation must be sealed to provide a watertight base.



## To order please quote:

Product Reference	Product Name
HOR/TAK-40/300	HÖRSTAD Black Tacker Clips 40mm
HOR/TAK-50/300	HÖRSTAD Black Tacker Clips 50mm
HOR/TAK-60/300	HÖRSTAD Black Tacker Clips 60mm



# **ELECTRIC UNDERFLOOR HEATING PRODUCTS**



**Designed with installers at its core, this innovative line combines cutting-edge technology with the practicality and reliability you expect from HÖRSTAD. Whether you're looking to streamline installations or deliver unmatched comfort and energy efficiency to your clients, our electric underfloor heating range is engineered to exceed expectations. Backed by decades of hands-on expertise.**

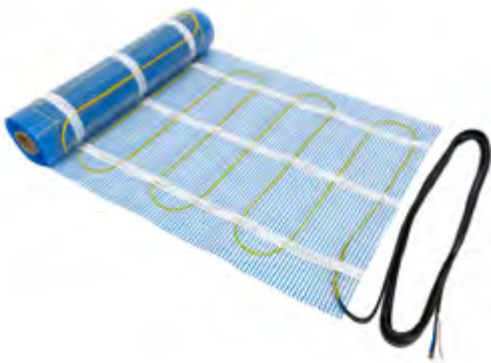
# SELF ADHESIVE MESH 150W/m<sup>2</sup>

**150W/m<sup>2</sup> Mesh electric underfloor heating works perfectly as a primary heat source in most property types. Fully self adhesive mesh sticks wire side down to protect the heating cable during installation.**

**Unique, stress-free Twisted Twin heating cable with full earth protection. IP68 impervious to moisture and safe in bathrooms, showers and wet rooms. 3.5mm thick mat with low profile LayFlat cold tail. Can also be used under tiled walls.**

*Technical data:*

- Voltage: 230V 50Hz
- Output: 150W/m<sup>2</sup>
- Total thickness: 3.5mm
- Area length: 1.0 - 24.0m<sup>2</sup>
- Mesh material: self-adhesive fibreglass
- Cable insulation: FEP and HR-PVC
- Protection rating: IP68
- Recommended max temp: 27°C
- Warranty: Lifetime (online registration required)



## To order please quote:

Product Reference	Product Name
HOR/EUFH-150W/1M	HÖRSTAD SELF ADHESIVE MESH 150W 1M <sup>2</sup>
HOR/EUFH-150W/1.5M	HÖRSTAD SELF ADHESIVE MESH 150W 1.5M <sup>2</sup>
HOR/EUFH-150W/2M	HÖRSTAD SELF ADHESIVE MESH 150W 2M <sup>2</sup>
HOR/EUFH-150W/2.5M	HÖRSTAD SELF ADHESIVE MESH 150W 2.5M <sup>2</sup>
HOR/EUFH-150W/3M	HÖRSTAD SELF ADHESIVE MESH 150W 3M <sup>2</sup>
HOR/EUFH-150W/4M	HÖRSTAD SELF ADHESIVE MESH 150W 4M <sup>2</sup>
HOR/EUFH-150W/5M	HÖRSTAD SELF ADHESIVE MESH 150W 5M <sup>2</sup>
HOR/EUFH-150W/8M	HÖRSTAD SELF ADHESIVE MESH 150W 8M <sup>2</sup>
HOR/EUFH-150W/10M	HÖRSTAD SELF ADHESIVE MESH 150W 10M <sup>2</sup>

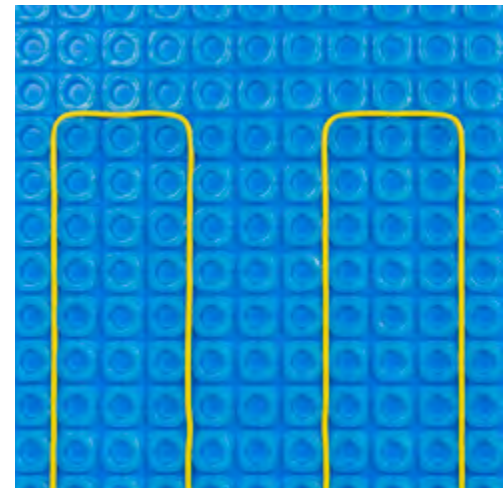
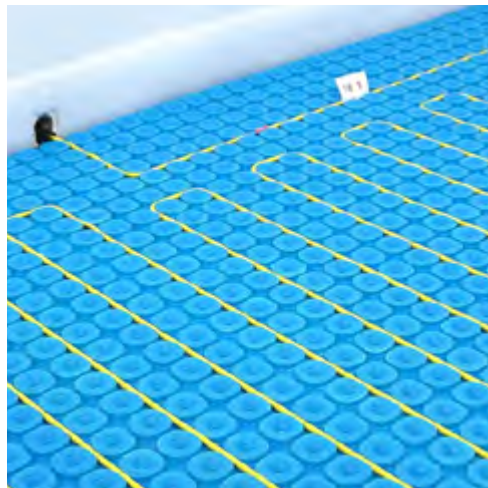
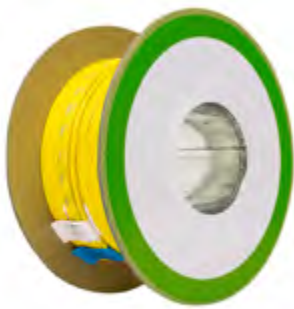
# MEMBRANE HEATING CABLE

**This heating cable is quick and easy to install, plus it's the most reliable UFH cable. It combines a Twisted Twin cable, and in-line joint technology. This removes risk of damaging the cable during installation, as cutting into the membrane and substrate is no longer required. Compatible with all decoupling membrane mats.**

## Technical data

- Cable length: 12 to 200m
- Protection rating: IP68
- Cable insulation: FEP and HR-PVC
- Robinson test rating: extra heavy use
- Recommended max temp: 27°C
- Warranty: lifetime
- Cable made in India

**No bulky hot/cold joint that needs cutting into the floor. Install into self-adhesive membrane at either 130W/m<sup>2</sup> or 195W/m<sup>2</sup>**



## To order please quote:

Product Reference	Product Name
HOR/EUFH/DMHC-12M-1.15M2	HÖRSTAD MEMBRANE HEATING CABLE 12M 1.15M <sup>2</sup>
HOR/EUFH/DMHC-18M-1.73M2	HÖRSTAD MEMBRANE HEATING CABLE 18M 1.73M <sup>2</sup>
HOR/EUFH/DMHC-21M-2.31M2	HÖRSTAD MEMBRANE HEATING CABLE 21M 2.31M <sup>2</sup>
HOR/EUFH/DMHC-31M-2.88M2	HÖRSTAD MEMBRANE HEATING CABLE 31M 2.88M <sup>2</sup>
HOR/EUFH/DMHC-27M-3.46M2	HÖRSTAD MEMBRANE HEATING CABLE 27M 3.46M <sup>2</sup>
HOR/EUFH/DMHC-42M-4.0M2	HÖRSTAD MEMBRANE HEATING CABLE 42M 4.0M <sup>2</sup>
HOR/EUFH/DMHC-50M-4.62M2	HÖRSTAD MEMBRANE HEATING CABLE 50M 4.46M <sup>2</sup>
HOR/EUFH/DMHC-55M-5.20M2	HÖRSTAD MEMBRANE HEATING CABLE 55M 5.20M <sup>2</sup>
HOR/EUFH/DMHC-75M-6.92M2	HÖRSTAD MEMBRANE HEATING CABLE 75M 6.92M <sup>2</sup>
HOR/EUFH/DMHC-100M-9.32M2	HÖRSTAD MEMBRANE HEATING CABLE 100M 9.23M <sup>2</sup>
HOR/EUFH/DMHC-150M/12.85M2	HÖRSTAD MEMBRANE HEATING CABLE 150M 12.85M <sup>2</sup>
HOR/EUFH/DMHC-200M-18.46M2	HÖRSTAD MEMBRANE HEATING CABLE 200M 18.46M <sup>2</sup>



# MERCHANDISE



**Get in touch if you would like some merch!**







Completed Project - House











**Beyond the ordinary.**

**HÖRSTAD ® Ltd  
Unit TS3 Telford Square  
Houston Industrial Estate  
Livingston  
EH54 5PQ**

**01506 379258  
hello@horstad.com  
www.horstad.com**

® HORSTAD 2024 E&OE