

# CLIP RAIL SYSTEM



The clip rail system is one of the most common underfloor heating systems providing a quick, flexible and effective form of heating within a screeded floor build-up.

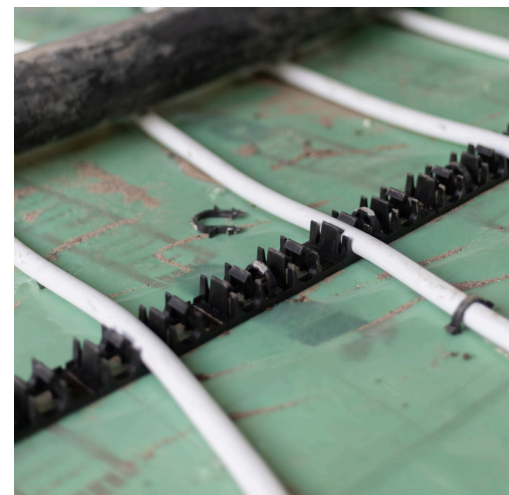
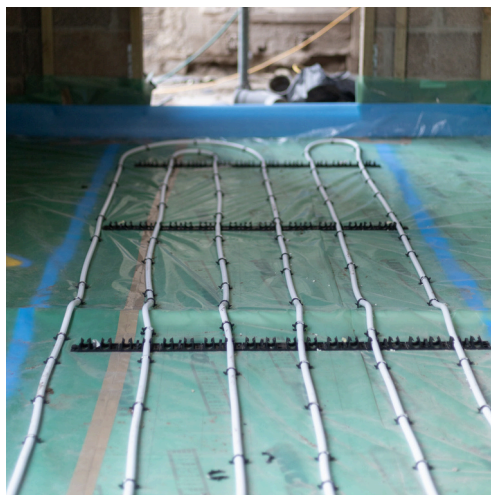
The clip rails clip together for fast installation and minimal fuss. Small, lightweight clip rails are easy to handle and move around on site. The fastest and easiest product to lay for screeded floors.

**Product Codes:**

**HOR/CLR-1420-1M/100: CLIP RAIL 1M LENGTH 100 PCS**

**HOR/CLR-1420-1M/GLU-100: CLIP RAIL 1M LENGTH WITH ADHESIVE 100PCS**

**5 YEAR GUARANTEE**



**HÖRSTAD**



[WWW.HORSTAD.COM](http://WWW.HORSTAD.COM)

# CLIP RAIL SYSTEM

---

## **Biscuit Screed System (Between Existing Joists)**

Ideal for refurbishment projects, this system involves fitting a rigid insulated board between existing joists. Underfloor heating (UFH) pipes are attached to the insulation and covered with a semi-dry sand and cement screed mix. The screed acts as a thermal mass, absorbing heat from the UFH system and releasing it gently into the living spaces above. Flooring is attached to the joists as usual.

## **Liquid Screed System (For Concrete Sub-Floors)**

This versatile system is commonly used for screeded floor build-ups on concrete sub-floors. Insulation is installed over the sub-floor, and cliprails are secured using adhesive backing strips and staples (ensure insulation compatibility if not supplied). UFH pipes are clipped to the rails following the design layout. Liquid screed should be applied soon after installation to protect the system. For watertightness, insulation must be sealed before applying the liquid screed.

## **Liquid Screed System (For Timber Joisted Structures)**

Designed for upper-level timber joisted floors, this system uses liquid screed with added binders to reduce weight load while providing efficient heating. UFH pipes are clipped to a vapor barrier sheet, and the screed can be laid as thin as 40mm. Ensure the timber structure can support the additional weight before installation.

