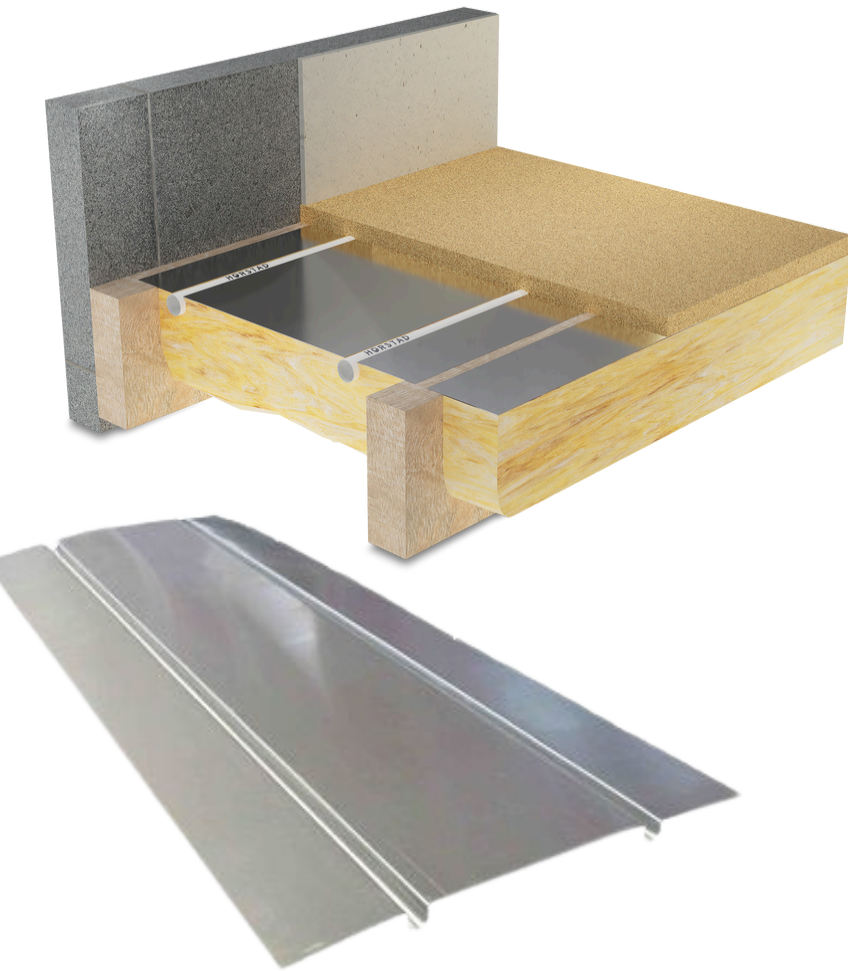


DIFFUSER PLATE SYSTEM



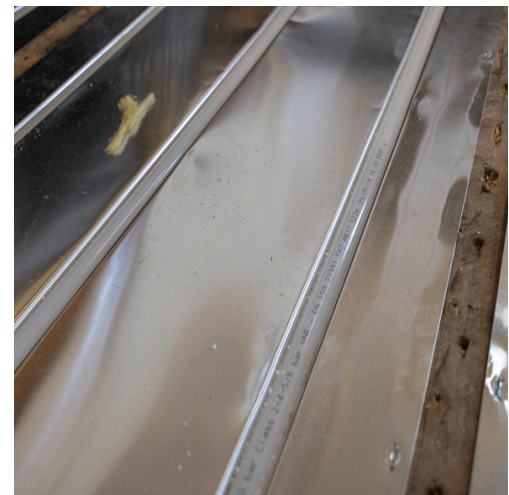
Combining contemporary heating technology with traditional timber floors, the diffuser plate system is designed specifically for joisted floor constructions.

Before the underfloor heating system is installed, mineral wool/fibre insulation, typically a minimum of 100mm, should be laid between the joists. It is important that the insulation layer is pushed up tight to the underside of the plates to maximise heat output.

The diffuser plates are then fixed to either side of the joist void can be laid on straight pipe runs which typically cover 80% of the heated floor are.

SEE NEXT PAGE FOR PRODUCT CODES

5 YEAR
GUARANTEE



HÖRSTAD



WWW.HORSTAD.COM

DIFFUSER PLATE SYSTEM

Product Codes:

HOR/PLATE/125-1000/1/16: 120 X 1000MM PLATE 1 GROOVE FOR 16MM PIPE

HOR/PLATE/390-1000/2-200C/16: 390 X 1000MM PLATE 2 GROOVE FOR 16MM PIPE 150MM PIPE SPACING

HOR/PLATE/390 X 1000/2-200C/16: 390 X 1000MM 2 GROOVE FOR 16MM PIPE 200MM PIPE SPACING

HOR/PLATE/390-1000/3-150C/16: 390 X 1000MM 3 GROOVE FOR 16MM PIPE 150MM PIPE SPACING

HOR/PLATE/410-1000/3-150C/16: 410 X 1000MM 3 GROOVE FOR 16MM PIPE 150 PIPE SPACING

HOR/PLATE/440-1000/2-200C/16: 440 X 1000MM 2 GROOVE FOR 16MM PIPE 200MM PIPE SPACING

HOR/PLATE/440-1000/3-150C/16: 440 X 1000MM 3 GROOVE FOR 16MM PIPE 150MM PIPE SPACING

HOR/PLATE/490-1000/2-200C/16: 490 X 1000MM 2 GROOVE FOR 16MM PIPE 200MM PIPE SPACING

HOR/PLATE/590-1000/3-200C/16: 590 X 1000MM 3 GROOVE FOR 16MM PIPE 200MM PIPE SPACING



HÖRSTAD



WWW.HORSTAD.COM