

# PERT-AL-PERT PIPE



High quality aluminium core ensures rapid and efficient heat distribution, quickly warming floors with minimal energy consumption. The core's robust durability guarantees a reliable and long-lasting solution. Compatible with various floor coverings, the pipes are suitable for both new constructions and retrofit projects.

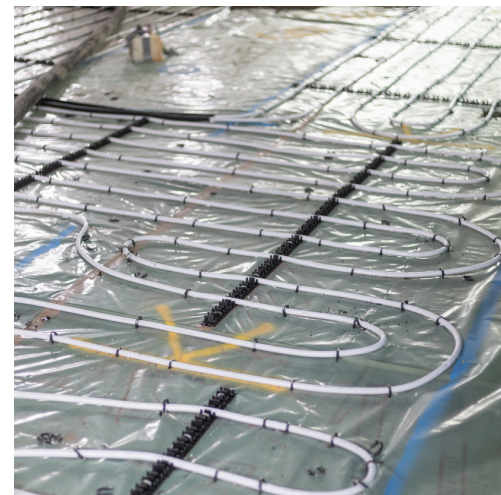
#### Technical Data:

- Material: High temperature resistant polyethylene (PE-RT)
- Density: >0,941 g/m<sup>3</sup>
- O<sub>2</sub> Permeability: <0.0010 g/m<sup>3</sup>.d
- Working temperature range: 95°C
- Max. temperature: 110°C
- Thermal conductivity (60°C): 0.43W/m<sup>2</sup>K
- Coefficient of linear extension: 0.025 mm/m<sup>°</sup>K
- Adhesion resistance: 20Mpa
- Elongation at break: >400%
- Burst pressure: 80 bar

#### Product Codes:

HOR/PERT-AL-PERT/16-300/02: 16MM X 300M REEL  
HOR/PERT-AL-PERT/16-600/02: 16MM X 600M REEL

 **LIFETIME  
GUARANTEE**



# HÖRSTAD



WWW.HORSTAD.COM