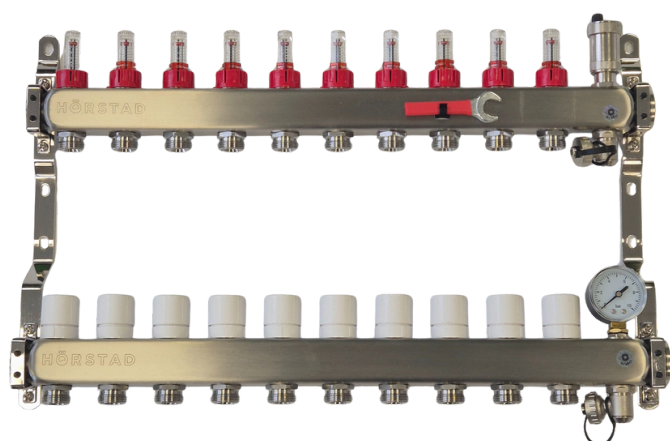
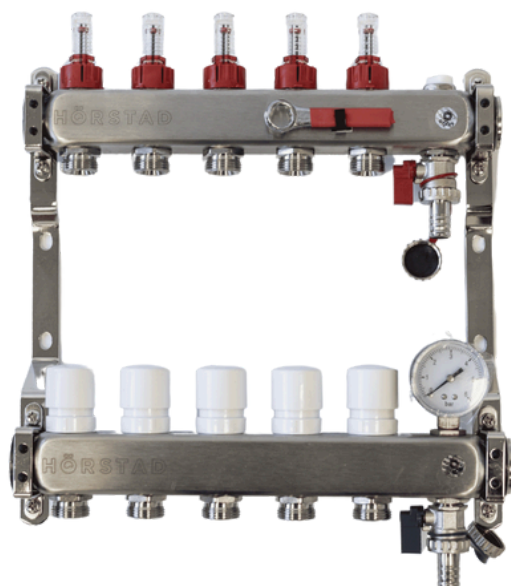


MANIFOLDS

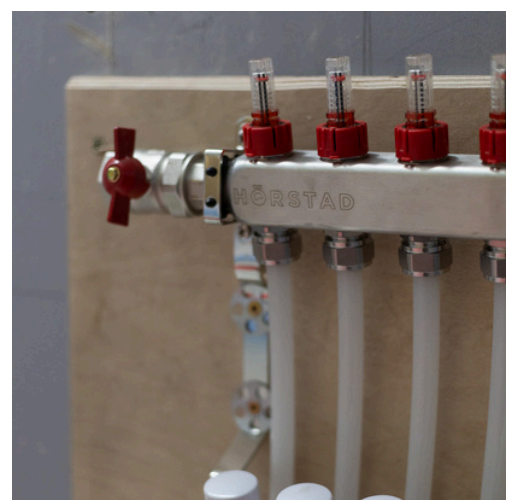
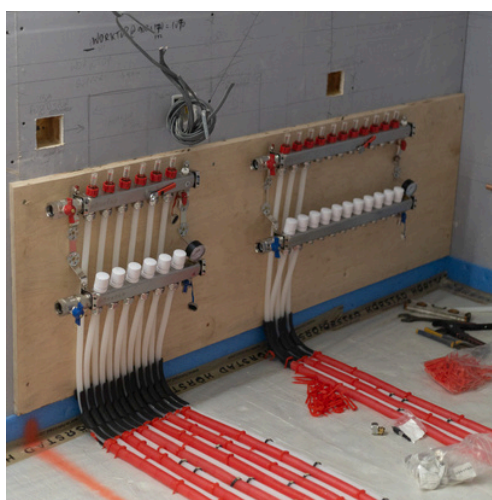
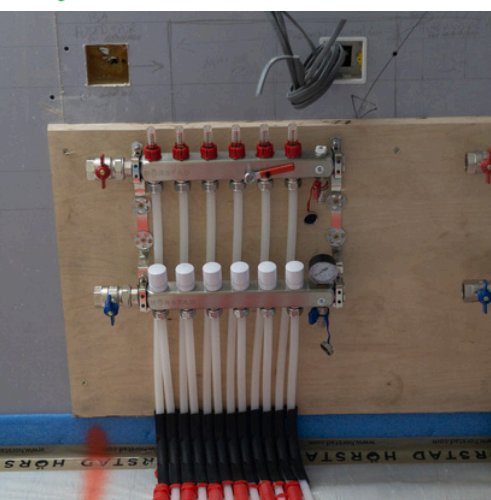


Underfloor heating manifolds are at the heart of the system, from this point it distributes warm water to each underfloor heating zone. They connect the underfloor heating pipework to the heat source, feeding water at the correct temperature either from the boiler or heat pump via a blending valve.

The manifolds are able to control multiple zones at once, generally zones refer to individual rooms which are controlled via their own thermostat. Each loop on the return bar has a valve to open or close the loop, controlled by the actuator valve, which responds to the call for heat from the thermostat.

SEE NEXT PAGE FOR PRODUCT CODES

5 YEAR
GUARANTEE



HÖRSTAD



WWW.HORSTAD.COM

MANIFOLDS

Manifold consists of:

- *Steel beams with hole spacing of 50mm*
- *Flowmeters*
- *Thermostatic valves*
- *1/2" - 3/4" Nipples*
- *Eurocone 3/4" - 16 x 2mm*
- *1" Blanking plug*
- *Fill and drain section with a ball valve and hose connection nipple*
- *Manual air release vent alternately*
- *Automatic air release vent*
- *2 Mounting brackets*

Each flow meter on our manifold can be individually shut off for removal and cleaning—no need to drain or dismantle the entire system. A spanner is included for ease of maintenance.

Recommended minimum installation clearances: 200mm between the finished floor level and bottom of the manifold. 100mm above the manifold, 50mm to either side of the manifold and allow an extra 100mm for the supply pipework.

Product Codes For Standard Manifolds:

HOR/MAN-02/SS: 2 PORT MANIFOLD

HOR/MAN-03/SS: 3 PORT MANIFOLD

HOR/MAN-04/SS: 4 PORT MANIFOLD

HOR/MAN-05/SS: 5 PORT MANIFOLD

HOR/MAN-06/SS: 6 PORT MANIFOLD

HOR/MAN-07/SS: 7 PORT MANIFOLD

HOR/MAN-08/SS: 8 PORT MANIFOLD

HOR/MAN-09/SS: 9 PORT MANIFOLD

HOR/MAN-10/SS: 10 PORT MANIFOLD

HOR/MAN-11/SS: 11 PORT MANIFOLD

HOR/MAN-12/SS: 12 PORT MANIFOLD

Product Codes For Manifolds with Automatic Vent:

HOR/MAN-AV-02/SS: 2 PORT MANIFOLD

HOR/MAN--AV-03/SS: 3 PORT MANIFOLD

HOR/MAN-AV-04/SS: 4 PORT MANIFOLD

HOR/MAN-AV-05/SS: 5 PORT MANIFOLD

HOR/MAN-AV-06/SS: 6 PORT MANIFOLD

HOR/MAN-AV-07/SS: 7 PORT MANIFOLD

HOR/MAN-AV-08/SS: 8 PORT MANIFOLD

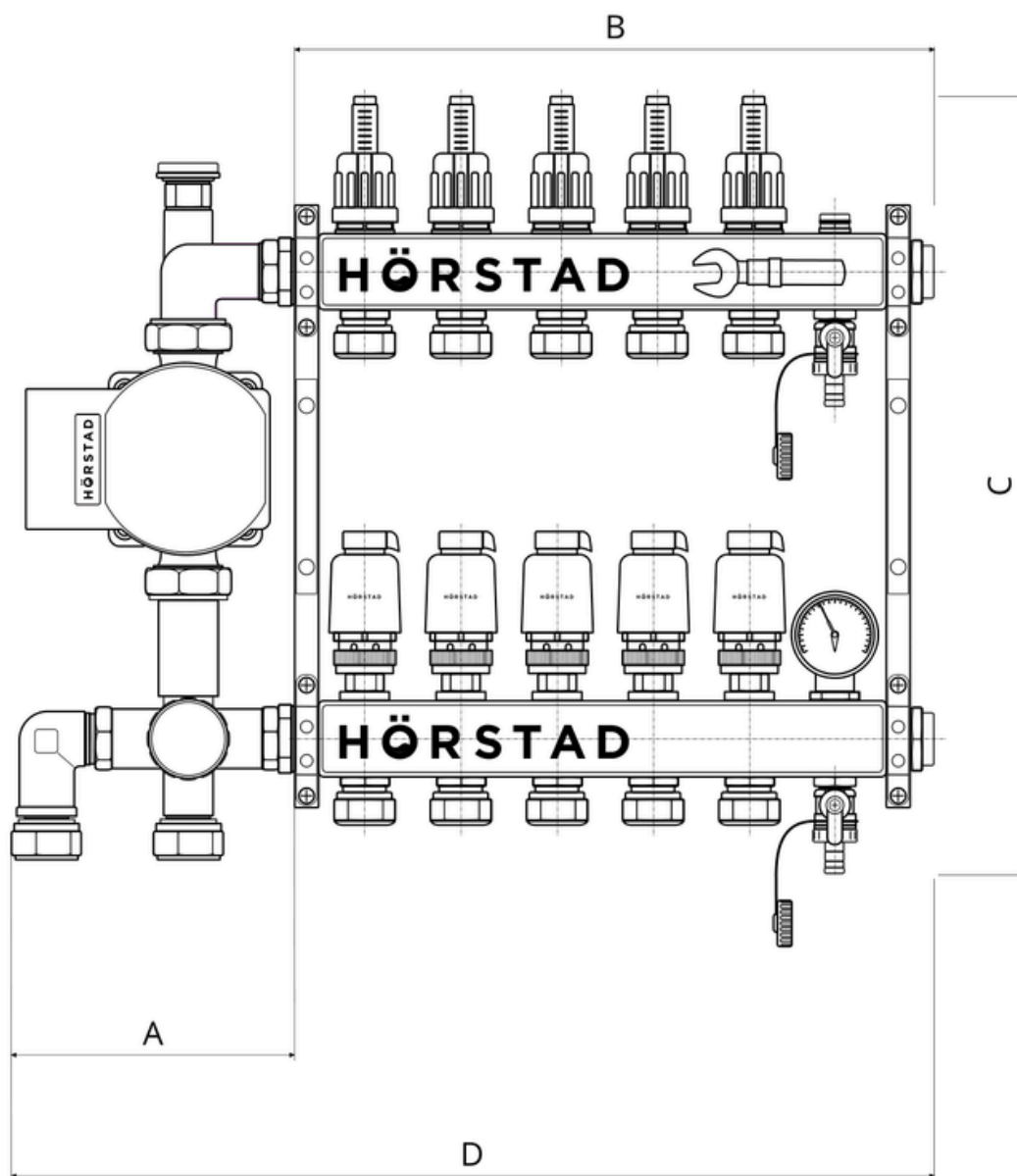
HOR/MAN-AV-09/SS: 9 PORT MANIFOLD

HOR/MAN-AV-10/SS: 10 PORT MANIFOLD

HOR/MAN-AV-11/SS: 11 PORT MANIFOLD

HOR/MAN-AV-12/SS: 12 PORT MANIFOLD

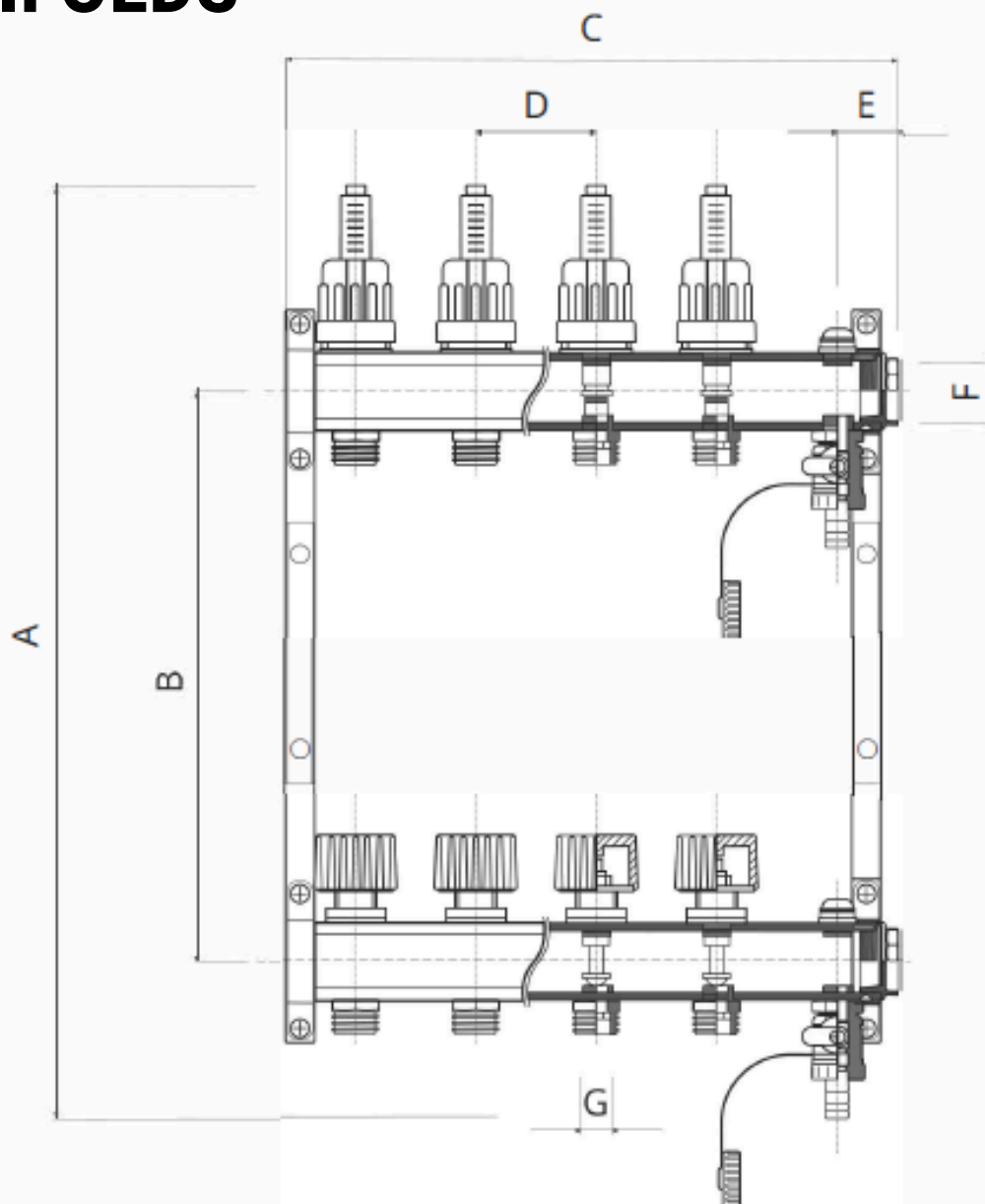
MANIFOLDS



Recommended minimum installation clearances: 200mm between the finished floor level and bottom of the manifold. 100mm above the manifold, 50mm to either side of the manifold and allow an extra 100mm for the supply pipe work.

MANIFOLD PORTS	2	3	4	5	6	7	8	9	10	11	12
A - Width of mixing pump (mm)	150	150	150	150	150	150	150	150	150	150	150
B - Width of manifold (mm)	180	230	280	330	380	430	480	530	580	630	680
C - Total height of manifold (mm)	400	400	400	400	400	400	400	400	400	400	400
D - Total width including mixing pump and ball valves (mm)	330	380	430	480	530	580	630	680	730	780	830

MANIFOLDS



Recommended minimum installation clearances: 200mm between the finished floor level and bottom of the manifold, 100mm above the manifold, 50mm to either side of the manifold and allow an extra 100mm for the supply pipe work.

Manifold Ports	2	3	4	5	6	7	8	9	10	11	12
A - Total Maximum Height (mm)	390	390	390	390	390	390	390	390	390	390	390
B - Beam Spacing (mm)	235	235	235	235	235	235	235	235	235	235	235
C - Total Length (mm)	170	228	278	328	378	428	478	528	578	628	678
D - Space Between Ports (mm)	50	50	50	50	50	50	50	50	50	50	50
E - Automatic Air/Vent (mm)	25	25	25	25	25	25	25	25	25	25	25
F - Diameter of Beams (mm)	420	420	420	420	420	420	420	420	420	420	420
G - Diameter of Accessory Connector (mm)	320	320	320	320	320	320	320	320	320	320	320
Net Weight (g)	1975	2360	2720	3100	3490	3840	4190	4580	4970	5295	5800